

General hints:

A. Surfacing requirements

This piece of equipment is intended for children to play with, rather than on, and therefore has no intended body support. No free height of fall is thereby stipulated.

B. Foundations

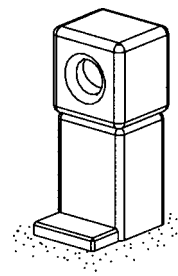
Please see detailed instructions at the end of this document.

Special information:

Please do not alter any parts of the equipment or the construction itself since this may affect the safety standards and your guarantee.

We reserve the right to make technical alterations!
For further information please call your local agent.

Small Singing Stone with pedestal and stepping stone
Order no. 10.41100



Graubner Play Stations for developing the senses

Data for shipment:

Number of parts: 3

- 1 Small Singing Stone with 2 anchoring irons
- 1 pedestal
- 1 stepping stone

Total weight: approx. 1600 kg
Heaviest single part: approx. 900 kg
approx. 90 x 110 x 100 cm

En-EN 16.04.2007

Design: W. Graubner Copyright © Richter Spielgeräte GmbH

Required space including operational space:

400 x 300 cm

Ground elevation

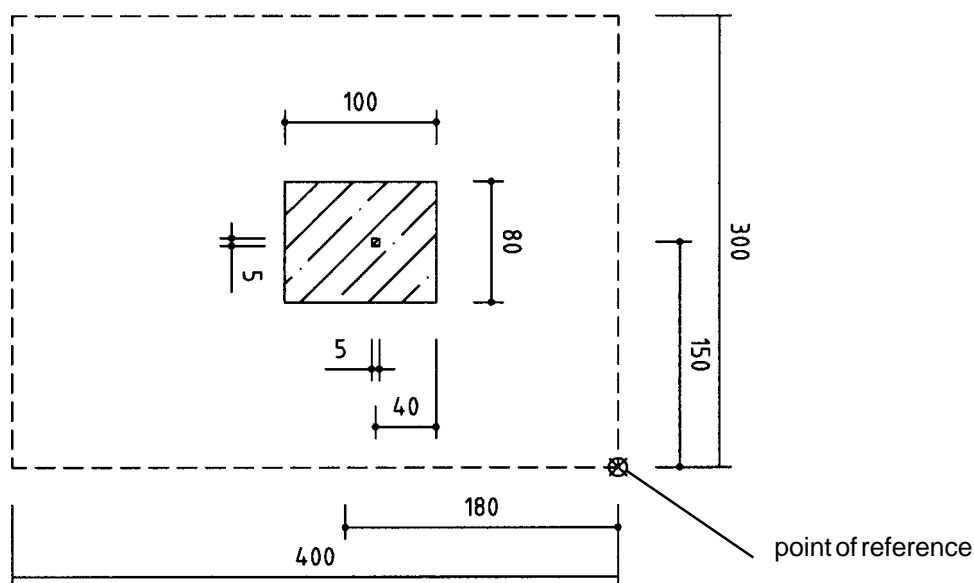
Scale 1:50

all dimensions in cm

Foundation block

Quality of concrete C 25/30

1 piece 100 x 80 x 60 cm
with anchor hole 5 x 5 x 20 cm
Excavation depth 70 cm



Recommended assembly tools:


- Heavy lifting equipment, e. g. crane
- Raising harness / sling bands
- Quick setting cement
- Lashing straps to secure the sling bands

Attention!

During the assembly period (including the setting of the concrete) it is not allowed to play on or put any weight on the equipment in order to secure stability during use after the assembly. Standard concrete requires at least 2 weeks to set.

Sequence of assembly operations:

1. Locate the site and take into account the space required, including the safety distances, according to the ground elevation on page 1.

2. Start surveying at the point of reference  and dig out the foundation hole.

3. Fill the foundation hole with concrete, tamp and level horizontally according to the sketch. Make anchor hole.

Please take into account the special sheet: Notes on the construction of foundations.

Let the concrete set.

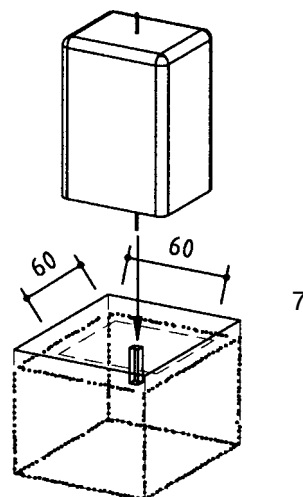
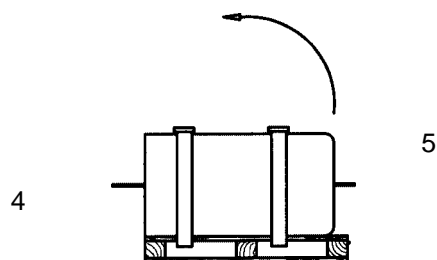
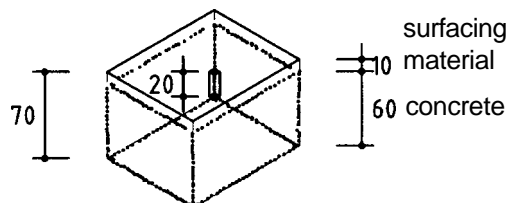
4. The pedestal stone must be flush with the edge of the pallet.

5. Insert the two anchoring irons into the stone using the quick setting cement.

6. Apply quick setting cement to the surface of the foundation (60 x 60 cm) and into the anchor hole.

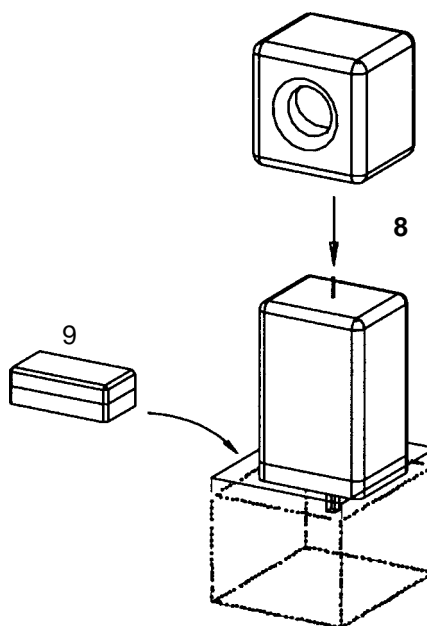
7. Carefully tilt up the pallet with the pedestal stone and insert the anchoring irons into the anchor hole of the foundation. Remove the pallet and the lashing straps.

2, 3

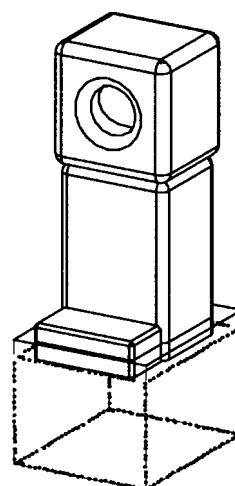


8. Fill / apply the openings in the foundation and the pedestal and the surfaces of the foundation and pedestal with quick setting cement and lift the stone into position.

9. Lay the stepping stone in front of the pedestal.



10. Cover the foundation up to ground level with surfacing material.



10

11. Repair minor damages caused during assembly or transportation.

12. Please ensure that all assembly aids, e. g. excess bolts, assembly instructions, distance battens or tape are removed entirely from the play equipment and the playground after work is finished.

