

General hints:

A. Surfacing requirements

This piece of equipment is intended for children to play with, rather than on, and therefore has no intended body support. No free height of fall is thereby stipulated.

B. Foundations

Please see detailed instructions at the end of this document.

C. Attention

The Large Singing Stone should only be installed by practised builders due to its weight. Only use textile sling bands to lift the stone. Steel cables will damage the stone.

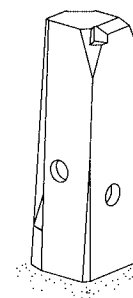
Special information:

Please do not alter any parts of the equipment or the construction itself since this may affect the safety standards and your guarantee.

We reserve the right to make technical alterations! For further information please call your local agent.

**Large Singing Stone
Order no. 10.42000**

Graubner Play Stations for developing the senses



Data for shipment:

Number of parts: 1

1 Large Singing Stone with anchoring iron

Weight: 2 - 5 tons depending on size
Size: Ø 60 - 80 cm, length up to 4.50 m

Required space including operational space:

400 x 300 cm

Ground elevation

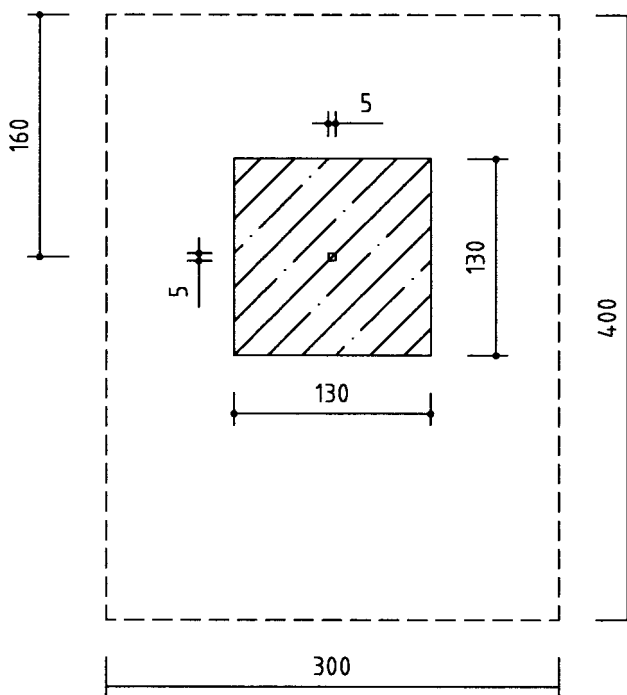
Scale 1:50

all dimensions in cm

Foundation block

Quality of concrete C 25/30

1 piece 100 x 80 x 60 cm
with anchor hole 5 x 5 x 20 cm
Excavation depth 70 cm



Recommended assembly tools:

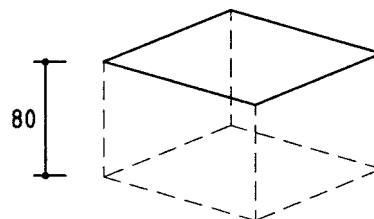
- Heavy lifting equipment, e. g. crane
- Raising harness / sling bands
- Quick setting cement
- Lashing straps to secure the sling bands

Attention!

During the assembly period (including the setting of the concrete) it is not allowed to play on or put any weight on the equipment in order to secure stability during use after the assembly. Standard concrete requires at least 2 weeks to set.

Sequence of assembly operations:

1. Locate the site and take into account the space required, including the safety distances, according to the ground elevation on page 1.



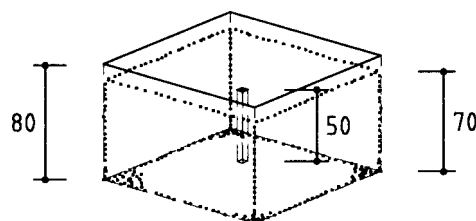
2. Dig out the foundation hole.

3. Fill the foundation hole with concrete, tamp and level horizontally according to the sketch. Make anchor hole.

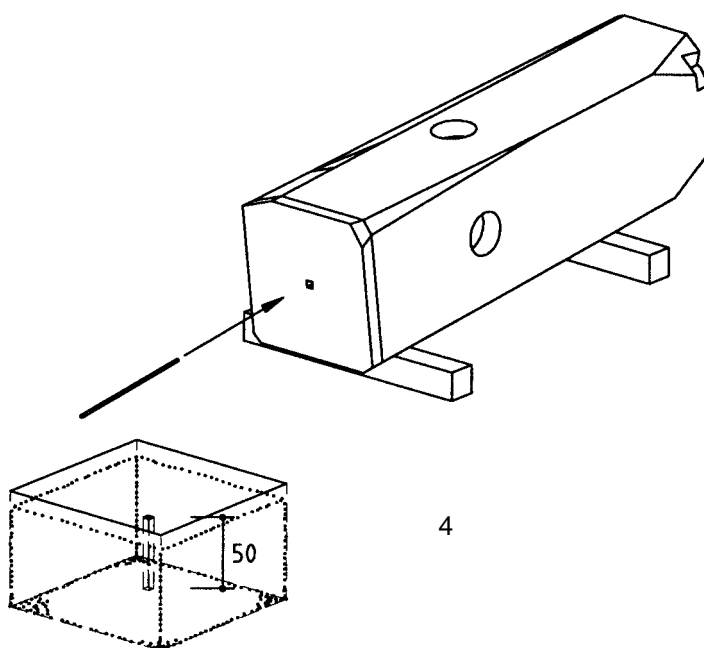
2, 3

Please take into account the special sheet: Notes on the construction of foundations.

Let the concrete set.



4. Set the anchoring iron into the stone's bottom using the quick setting cement.



5. Lay the textile sling band around the stone just above the centre of gravity in form of a self-contracting noose.
6. Carefully lift the stone. If it is crooked, correct the hanging.
7. When lifting, try not to deform the anchoring iron. If so, re-straighten.
8. Fill/apply the opening in the foundation and the surface of the foundation with quick setting cement.
9. Lift the stone into position. Lead anchoring iron into the anchor hole.
10. Cover the foundation up to ground level with surfacing material.
11. Repair minor damages caused during assembly or transportation.
12. Please ensure that all assembly aids, e. g. excess bolts, assembly instructions, distance battens or tape are removed entirely from the play equipment and the playground after work is finished.

5 - 7

