

**General hints:**

**A. Surfacing requirements**

This equipment should be installed on an impact absorbing surfacing / loose fill material that accords with EN 1177 and is adequate for a maximum free height of fall of 2.00 m.

**B. Foundations**

Please see detailed instructions at the end of this document.

**Special information:**

Tested by TÜV Product Service GmbH.

Please do not alter any parts of the equipment or the construction itself since this may affect the safety standards and your guarantee.

We reserve the right to make technical alterations!  
For further information please call your local agent.

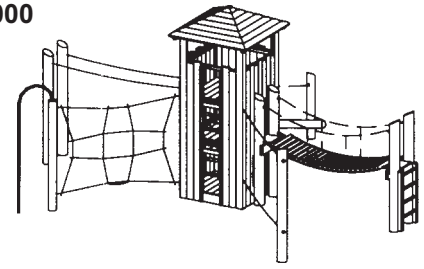
**Required space including safety distances (EN 1176):  
1080 x 955 cm**

For ground elevation and detailed assembly instructions see inside

**Please follow the assembly instructions of the play equipment listed below:**

Order no.	3.20600	Square Tower with Roof
		Suspension Bridge
	3.66090	Running surface
	3.66030	Support frame with ladder
	3.66040	Support frame attached to centre of Tower
	3.68300	Inclined Balancing Beam
	3.68500	Double Hanging Rope
	3.69010	Balancing Rope with Holding Rope
	3.69350	Inclined Climbing Net

**Tower Combination 33  
Order no. 2.33000**



**Data for shipment:**

Number of parts: 11

**Square Tower with Roof, consists of:**

- 1 tower
- 1 roof
- 1 bundle: 4 foundation timbers

**Inclined Balancing Beam, consists of:**

- 1 bundle: beam, stand post with chain

**Suspension Bridge, consists of:**

- 1 support frame
- 1 support frame with ladder
- 1 running surface 3 m, with chains and distance battens

**Balancing Rope with Holding Rope, consists of:**

- 1 stand post with 2 ropes and distance batten

**Vertical Climbing Net, consists of:**

- 1 bundle: 1 stand post, net made of Corocord®-rope, distance batten, bent sliding pole

**Double Hanging Rope, consists of:**

- 2 bundles: 2 stand posts with 2 ropes and distance battens each

Total weight: 1100 kg  
Largest single part: 450 kg  
1.40 x 1.40 x 3.25 m

**Recommended assembly aids:**

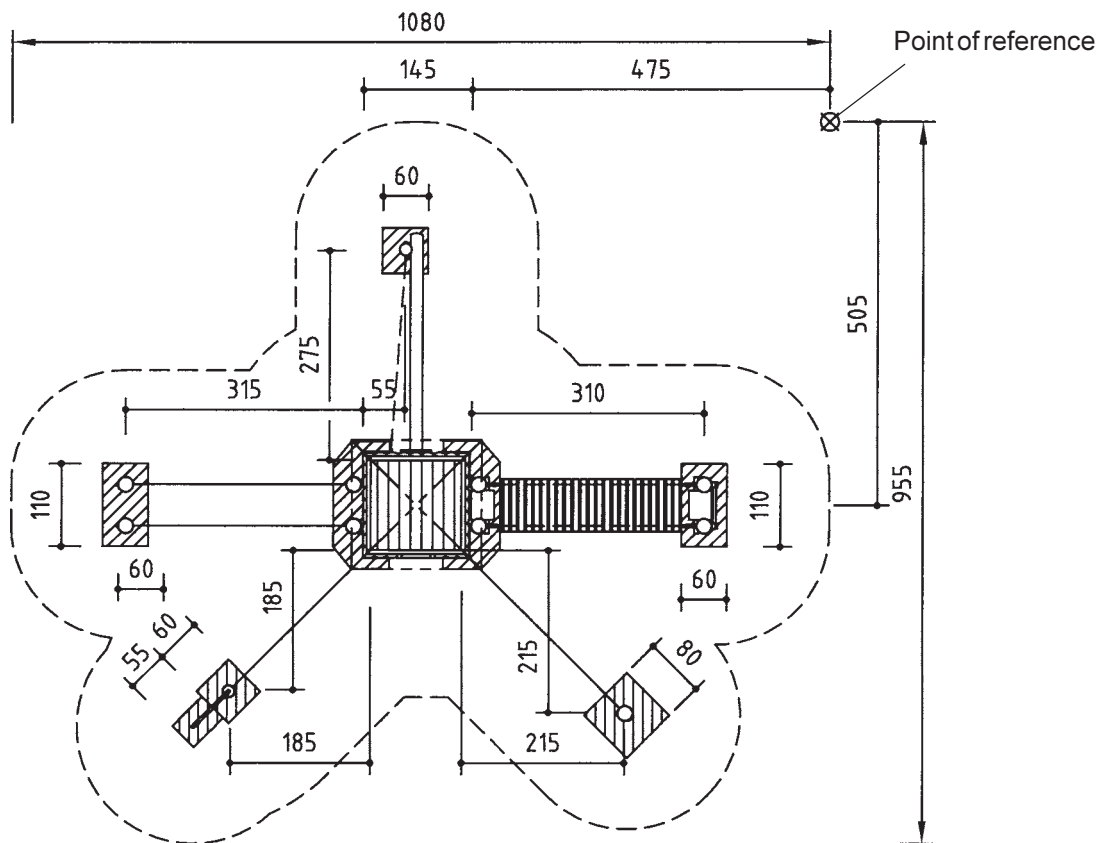
- Set of carpenter's tools
- Set of ratchets
- Set of spanners
- Torx insert T 20, 25, 30, 40, 50
- Rubber mallet
- Battens for support during assembly to erect the tower: crane or 4 workers

**Attention!**


During the assembly period (including the setting of the concrete) it is not allowed to play on or put any weight on the equipment in order to secure stability during use after the assembly. Standard concrete requires at least 2 weeks to set.

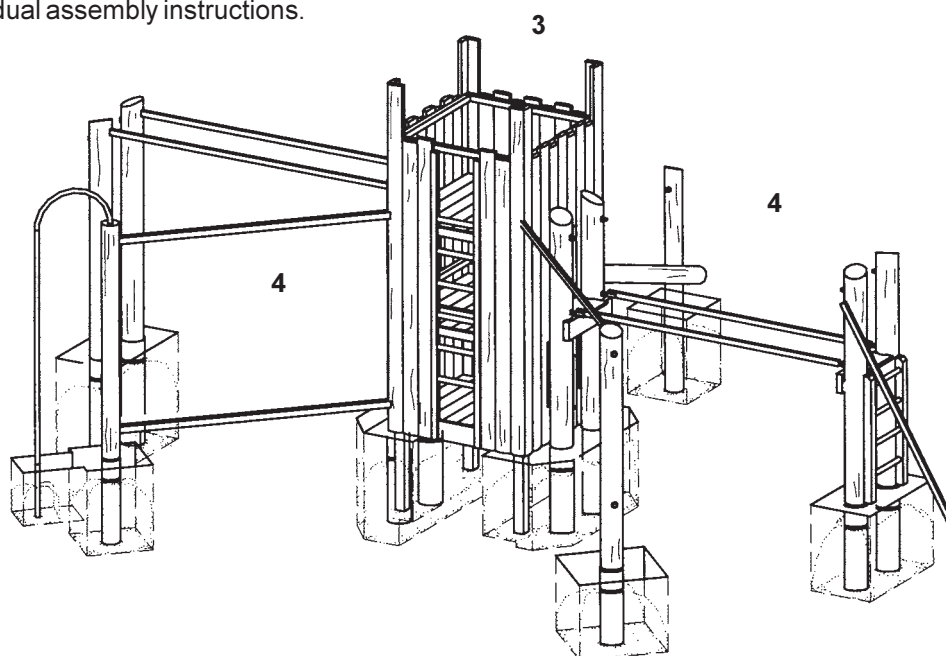
**Ground elevation**

Scale 1:100  
all dimensions in cm



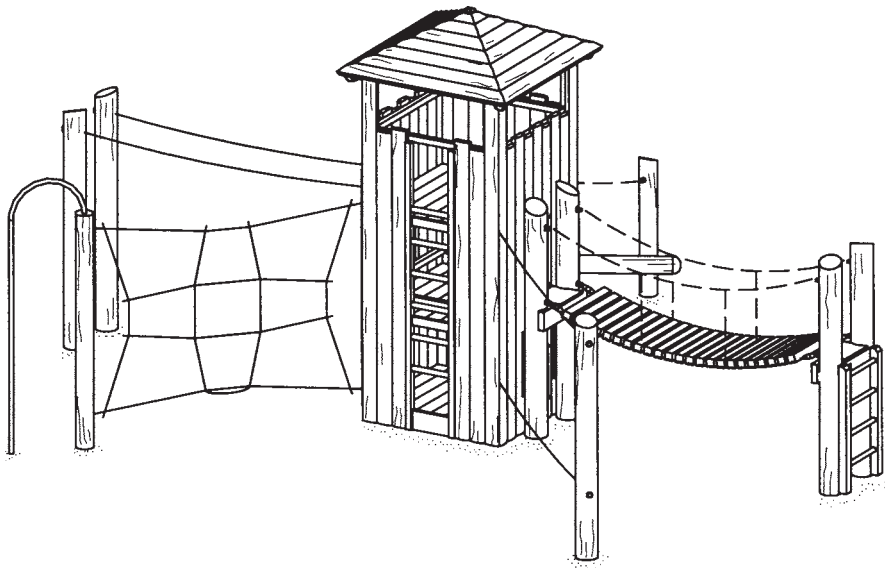
**Sequence of assembly operations:**

1. Locate the site and take into account the space required, including the safety distances, according to the ground elevation on page 1.
2. Start surveying at the point of reference  and dig out the foundation holes.
3. Put up the Tower according to the individual assembly instructions, and place into the foundation holes. Pay particular attention to the positions of the attached equipment.
4. Install the attached equipment according to their individual assembly instructions.



5. Check the following points before you start to concrete:
  - depth of installation according to the marks
  - position and orientation of the elements to each other (measure the diagonal distances)
  - correct position of the distance battens.
6. Fill the foundation holes with concrete B 25 (earth damp), largest grain size 16 mm and tamp. Round the edges of the foundations and cover with ground material.

7. Complete the combination, following the individual assembly instructions, after the concrete has set.
8. Repair minor damages caused during assembly or transportation.
9. Please ensure that all assembly aids, e. g. excess bolts, assembly instructions, distance battens or tape are removed entirely from the playground equipment and the playground after work is finished.



**Please note that after about 6 weeks all screws and bolts need to be checked and, if necessary, retightened.**