

General hints:

A. Surfacing requirements

This equipment should be installed on an impact absorbing surfacing / loose fill material that accords with EN 1177 and is adequate for a maximum free height of fall of 1.50 m. At least 40 cm of play sand are required for the correct functioning of the equipment.

B. Foundations

Please see detailed instructions at the end of this document, especially depths of foundations for steel feet.

Special information:

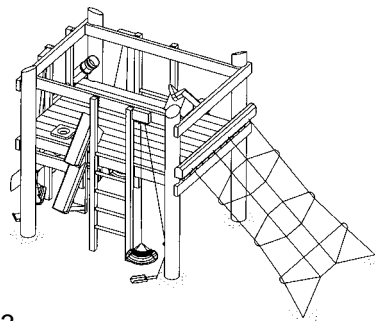
Tested by TÜV Product Service GmbH.

Please do not alter any parts of the equipment or the construction itself since this may affect the safety standards and your guarantee.

We reserve the right to make technical alterations!
For further information please call your local agent.

Building Site
Order no. 5.02000

- with steel feet
Order no. 5.02001
Order no. L5.02000



Data for shipment:

Number of parts: 13

- 1 front side, already attached
- 1 ladder, 1 sand hoist
- 1 front side
- 2 floor panels
- 1 bundle: 2 tie beams for floor, 2 tie beams for hand rail with 1 sand hoist each, 2 short tie beams, 1 floor beam
- 1 bundle: 2 ladders, 3 shovels with chains
- 2 sand chute, 1 sand wheel assembled
- 1 sand pipe, curved
- 1 sand pipe, straight
- 1 pipe bend with laminated panel
- 1 bag of bolts
- 1 bundle: beam with climbing net

Total weight: 700 kg
Largest single part: 150 kg
3.25 x 2.00 x 0.25 m

Required space including safety distances (EN 1176):
755 x 490 cm

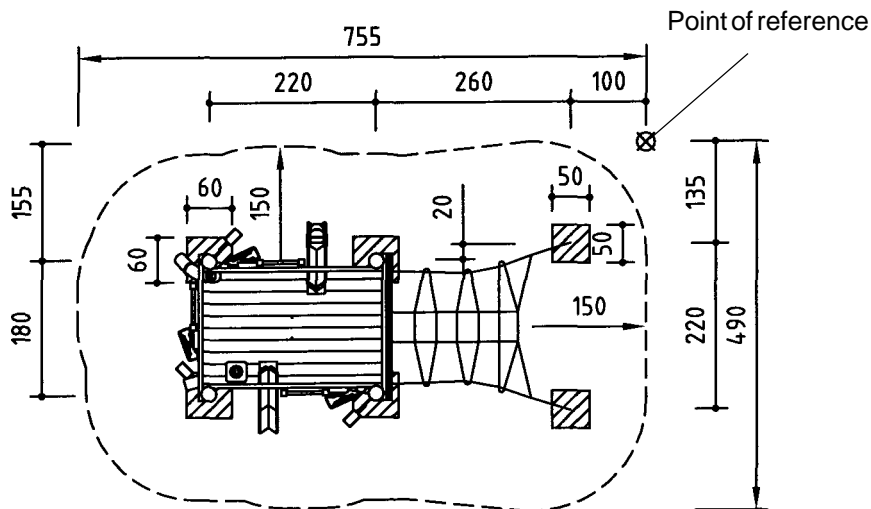
Ground elevation

Scale 1:100
all dimensions in cm

Foundation blocks

4 pieces 60 x 60 x 40 cm
Excavation depth 70 cm
for steel feet 80 cm
2 pieces 50 x 50 x 40 cm
Excavation depth 80 cm

Please pay particular attention to the assembly instruction of the Climbing Net, order no 3.69160.



Recommended assembly aids:

- Set of carpenter's tools
- Set of ratchets
- Set of spanners
- Torx insert T 20, 25, 30, 40, 50
- Rubber mallet
- 4 screw clamps
- Battens for support during assembly

Attention!

During the assembly period (including the setting of the concrete) it is not allowed to play on or put any weight on the equipment in order to secure stability during use after the assembly. Standard concrete requires at least 2 weeks to set.


Sequence of assembly operations:

General note:

This playground equipment has been assembled completely in our workshop. All components are marked at their joints. Adhere strictly to these marks during assembly!

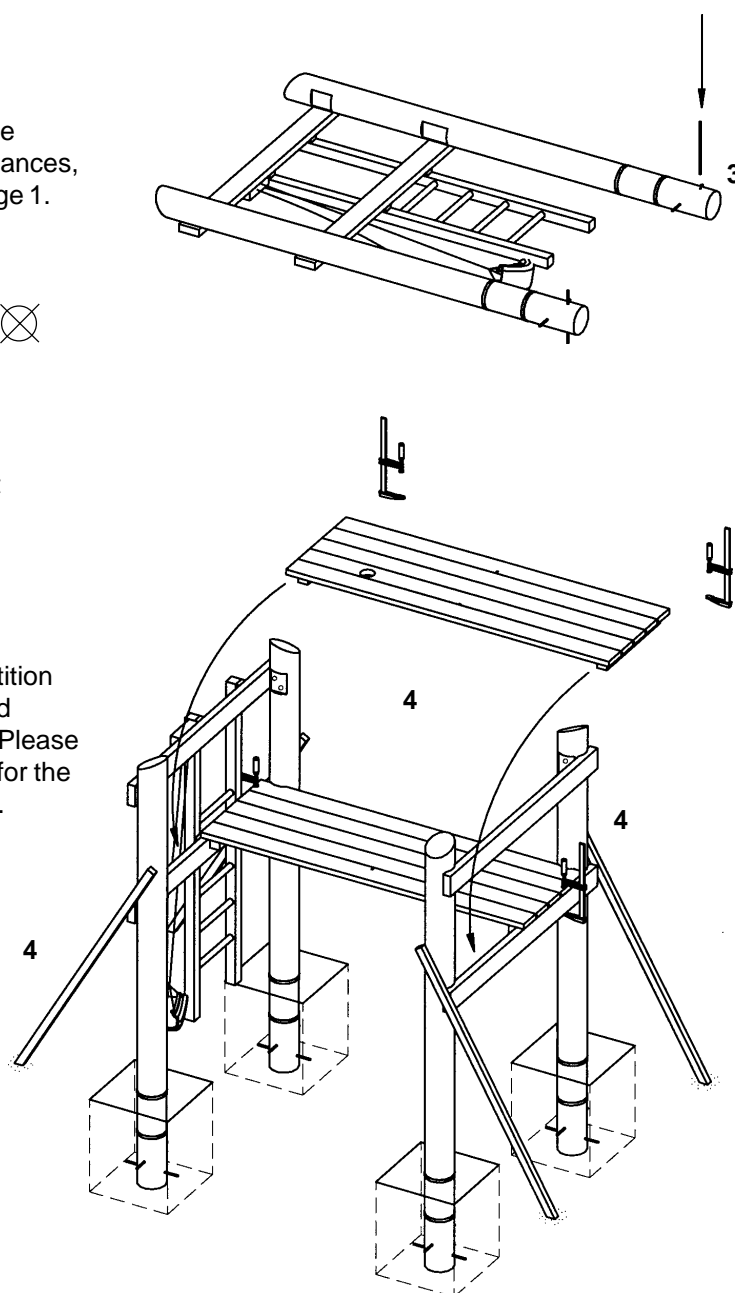
The Building Site is playground equipment for playing with sand. We recommend to assemble and erect the equipment prior to delivery of the sand. Then only the foundation holes for the stand posts must be dug out.

1. Locate the site and take into account the space required, including the safety distances, according to the ground elevation on page 1.

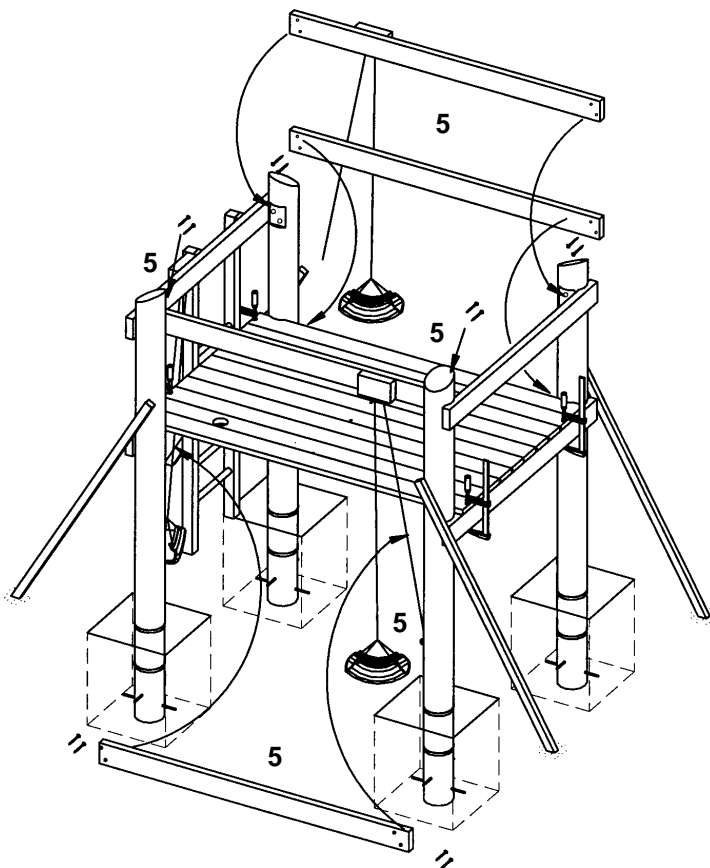
2. Start surveying at the point of reference  and dig out the foundation holes.

3. Place the pre-fabricated front sides next to the foundation holes and hammer the foundation irons into the stand posts.

4. Erect the front sides and support in position using battens. Insert the floor panels and secure in position using screw clamps. Please pay attention to the location of the hole for the sand pipe. Roughly align the equipment.

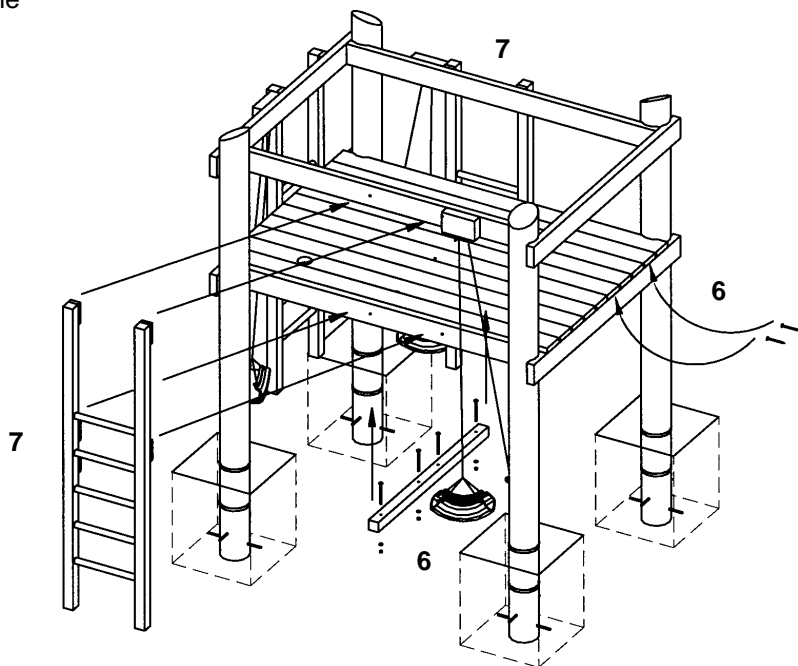


5. Screw the tie beams for floor and handrail (with the attached sand hoist) to the stand posts at the marked spots. Install the eyelet bolts for the sand hoists at the marked spots on the stand posts.

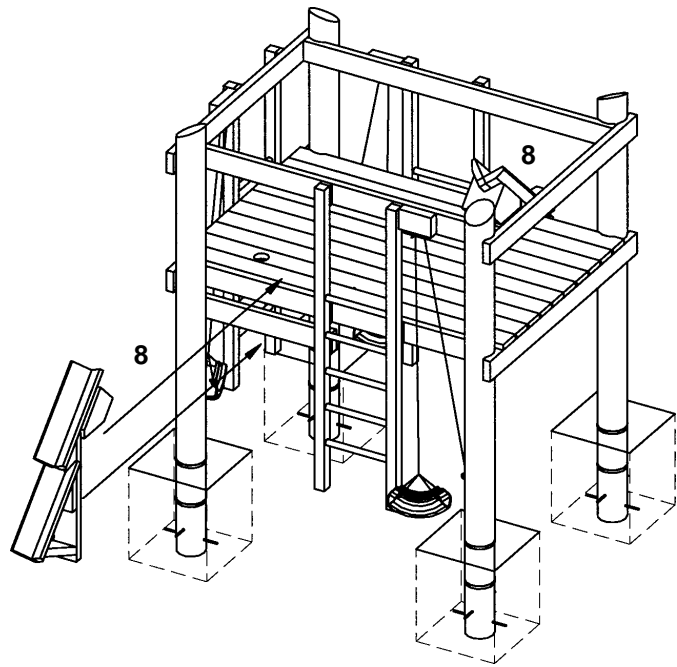


6. Attach the floor beam to the bottom of the floor panels. Screw the floor panels to the front sides. Remove the screw clamps.

7. Install the ladders at the tie beams.



8. Install 1 short tie beam each (for assembly of the sand chutes) onto the stand posts and the ladders. Then screw the sand chutes (one with sand wheel) onto the tie beams and from below to the floor panels.

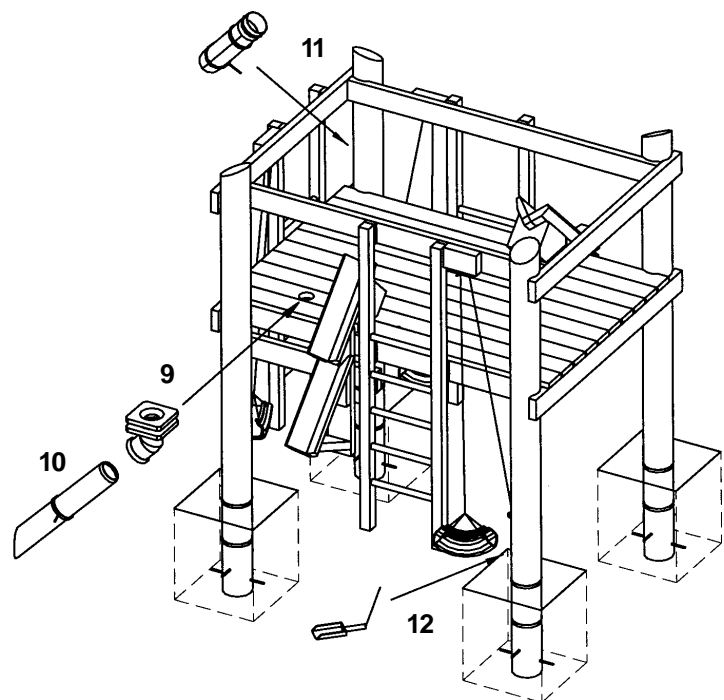


9. Unscrew the laminated panel of the curved pipe and screw, according to the marks, from above and below onto the hole in the floor panels.

10. Insert the straight pipe into the curved pipe from below and connect the pipe clip to the plate on the stand post.

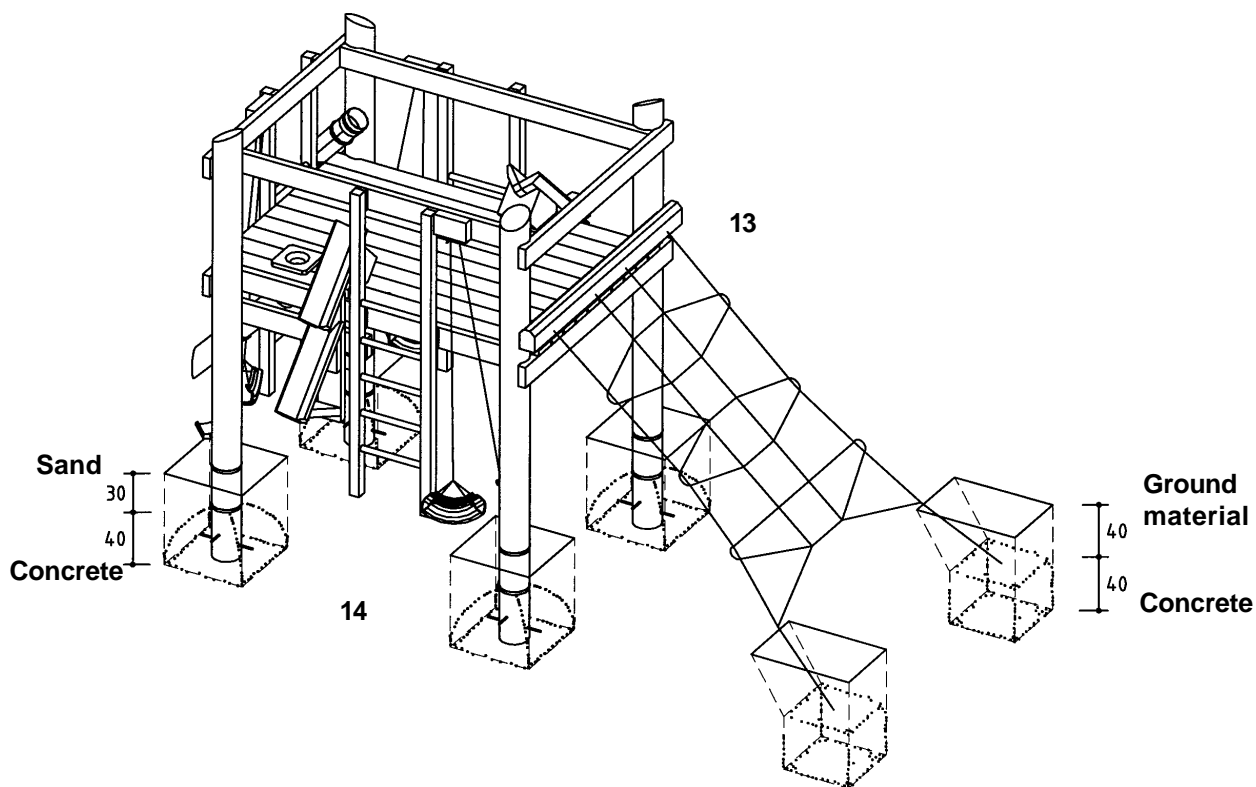
11. Screw the curved sand pipe with the clips onto the plates on the stand post and the tie beam.

12. Screw one shovel each onto the stand posts (according to the marks).



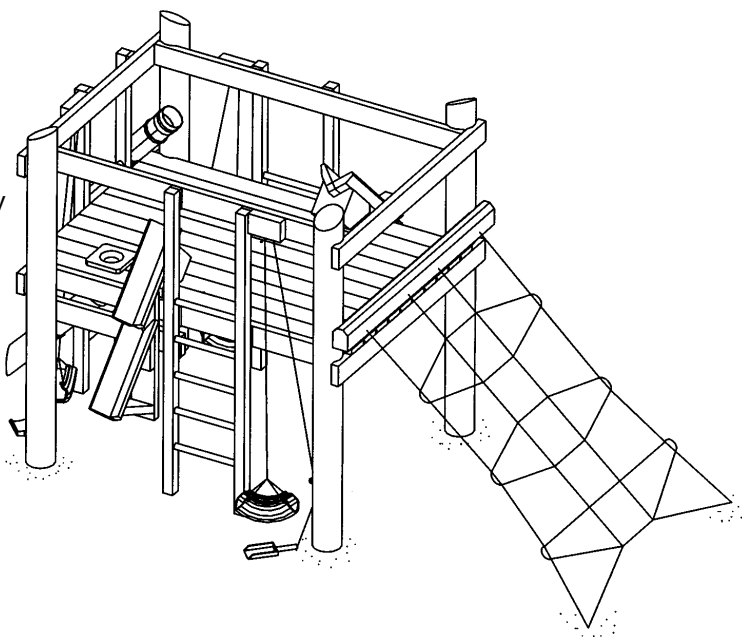
13. Install the climbing net according to the assembly instructions order no. 3.69160.

14. Exactly align the equipment (spirit level, check the diagonal distances).
Fill the foundation holes with concrete B 25 (earth damp), largest grain size 16 mm and tamp. Round the edges of the foundations and cover with ground material.



15. Repair minor damages caused during assembly or transportation.

16. Please ensure that all assembly aids, e. g. excess bolts, assembly instructions, distance battens or tape are removed entirely from the play equipment and the playground after work is finished.



Please note that after about 6 weeks all screws and bolts need to be checked and, if necessary, retightened.