

General hints:

A. Surfacing requirements

This element is suitable for installation in a number of ways and in combination with other equipment. Surface with adequate drainage (e. g. Water Basin, sand, pavement with gutter) is required. This piece of equipment is intended for children to play with, rather than on, and therefore has no intended body support. No free height of fall is thereby stipulated.

B. Foundations

No special foundations required

C. Water connections

The water dispenser must be connected directly to the local water mains (1/2 inch with external thread or alternatively 1 inch without external thread).

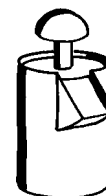
Special information:

Tested by TÜV Product Service GmbH.

Please do not alter any parts of the equipment or the construction itself since this may affect the safety standards and your guarantee. This equipment is supplied with information on the basis of it being used in combination with other Richter equipment.

We reserve the right to make technical alterations!
For further information please call your local agent.

**Mushroom Pump
Order no. 5.18000**



Data for shipment:

Number of parts: 2

- 1 water dispenser
- 1 bag of bolts

Note

Round Reservoir and Round Water Basin are not part of the standard supply volume!

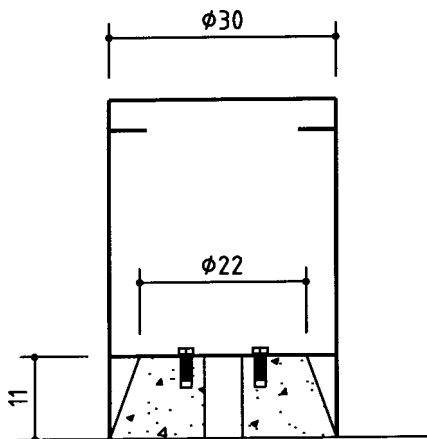
Total weight: 12 kg

En-EN 27.04.2004

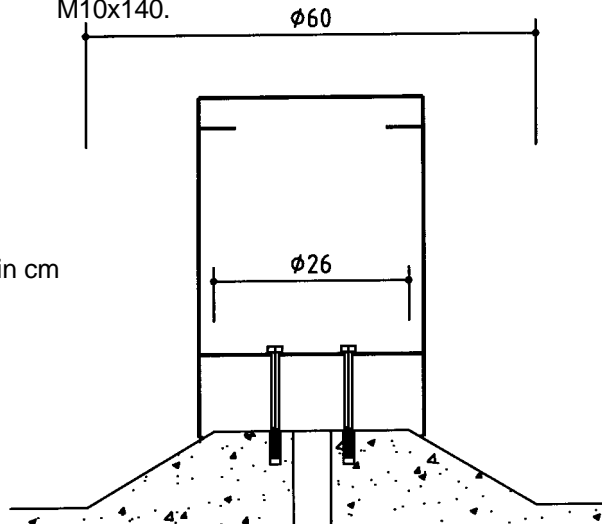
Copyright © Richter Spielgeräte GmbH * 83112 Frasdorf * Germany

Options of assembly

- 1. mounted on Round Reservoir, order nos. 5.22000 and 5.22100, with 4 fastening bolts M10x35.

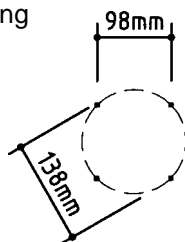


- 2. mounted on Round Water Basin, order nos. 5.24200 and 5.24400 with 4 fastening bolts M10x140.



Scale 1:100
all dimensions in cm

- 3. or alternatively mounted on natural stone or pedestal according to hole pattern.



Scale 1:100
all dimensions in cm

Recommended assembly aids:

Set of ratchets
Allen key no. 4

Attention!

- The insert (button, valve with connecting pipe must be removed during the frost period, and stored in a frost free location..
- Seal the pipe on site (manufacture a cover to close the hole on site).

Sequence of assembly operations:

1. Unscrew the cover and remove the top part and the pumping mechanism.
2. Install the housing on top of the water mains on site (see page 1).
3. **Connection:**
 - a) either, connect the a hose pipe - or pipe end with external thread, 1 inch: in this case attach directly to the hose pipe of the pumping mechanism,
 - b) or connect to a hose pipe, internal diameter 1/2 inch: in this case remove the hose pipe and the spiral spring (guard against kinking) from the pumping mechanism. Push the spirial spring over the new hose pipe and attach to the pumping mechanism.
4. Insert the top part with the connected mechanism into the housing, take care not to kink or pinch the hose pipe, and screw on.

