

**General hints:**

**A. Intended age range**

This equipment is suitable for children from 5 to 10 years.

**B. Surfacing requirements**

This equipment should be installed on an impact absorbing surfacing / loose fill material that accords with EN 1177 and is adequate for a maximum free height of fall of 0.75 m. The equipment must be installed in play sand to achieve its function

**C. Foundations**

Please see detailed instructions at the end of this document, especially depths of foundations for steel feet.

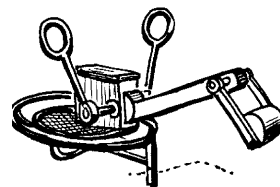
**Special information:**

Tested by TÜV Product Service GmbH.

Please do not alter any parts of the equipment or the construction itself since this may affect the safety standards and your guarantee.

We reserve the right to make technical alterations! For further information please call your local agent.

**Large Excavator  
Order no. 5.30000**



**Data for shipment:**

Number of parts: 2

- 1 excavator
- 1 foundation frame

Total weight: 250 kg

En-EN 18.12.2003

Copyright © Richter Spielgeräte GmbH \* 83112 Frasdorf \* Germany

**Required space including safety distances (EN 1176):**

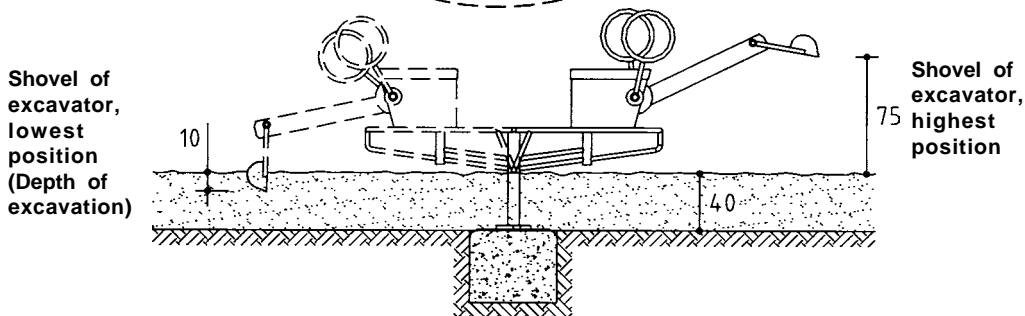
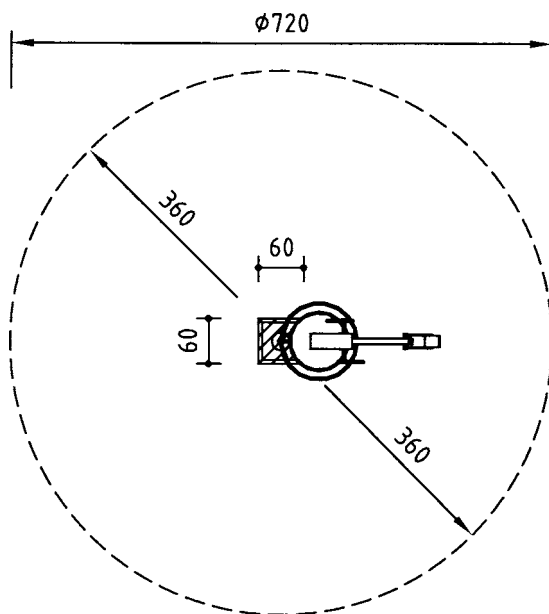
Functional space, diameter 720 cm

**Ground elevation**

Scale 1:100  
all dimensions in cm

**Foundation block**

1 pieces 60 x 60 x 50 cm  
Excavation depth 90 cm



**Recommended assembly aids:**

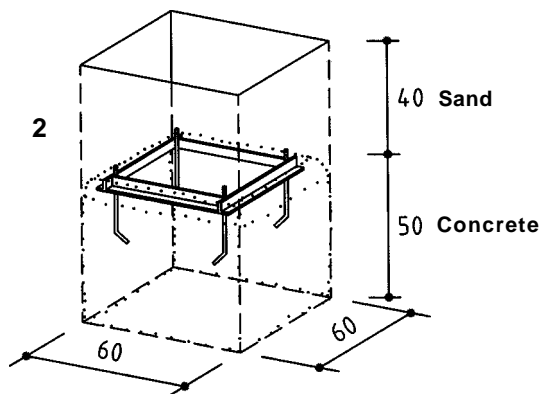
- Set of carpenter's tools
- Set of ratchets
- Torx inserts T 20, 25, 30, 40, 50
- Rubber mallet

**Attention!**

During the assembly period (including the setting of the concrete) it is not allowed to play on or put any weight on the equipment in order to secure stability during use after the assembly. Standard concrete requires at least 2 weeks to set.

**Sequence of assembly operations:**

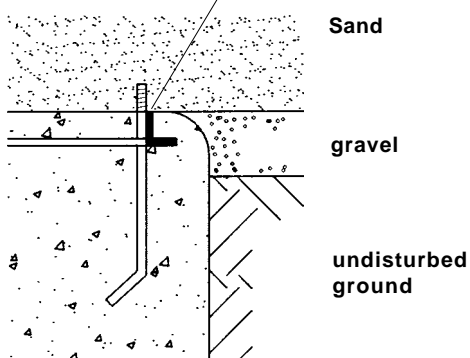
1. Locate the site and take into account the space required, including the safety distances, according to the ground elevation on page 1.
2. Dig out the foundation hole, fill the foundation hole with concrete B 25 (earth damp), largest grain size 16 mm and set the foundation frame. Tamp the concrete and position the foundation frame according to the detail below. Pay particular attention to the extra sheet on foundations.



**Detail**

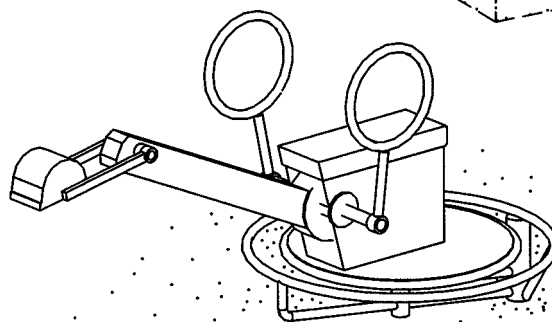
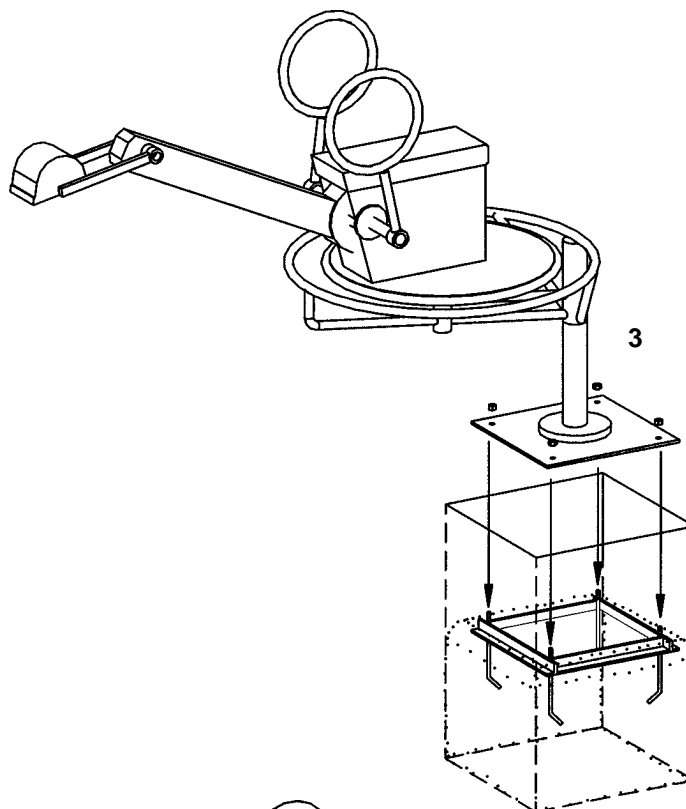
2

The top edge of the frame is used to level the surface of the foundation



**Foundation, concrete**

3. After the concrete has set screw on the Excavator. Fill the functional space, diameter 7.20 m, with sand.
4. Repair minor damages caused during assembly or transportation.
5. Please ensure that all assembly aids, e. g. excess bolts, assembly instructions, distance battens or tape are removed entirely from the play equipment and the playground after work is finished.



**Please note that after about 6 weeks all screws and bolts need to be checked and, if necessary, retightened.**