

General hints:

A. Surfacing requirements

The equipment must be installed in play sand to achieve its function.

This equipment does not reach the free height of fall limit of 600 mm above which a specific requirement for impact absorbing surfacing or materials is necessary.

B. Foundations

Please see detailed instructions at the end of this document, especially depths of foundations for steel feet.

Special information:

Tested by TÜV Product Service GmbH.

Please do not alter any parts of the equipment or the construction itself since this may affect the safety standards and your guarantee.

We reserve the right to make technical alterations!
For further information please call your local agent.

Small Excavator
Order no. 5.32000



Data for shipment:

Number of parts: 1

1 Excavator
with foundation chain and anchoring iron

Total weight: 55 kg

En-EN 25.04.2004

Copyright © Richter Spielgeräte GmbH * 83112 Frasdorf * Germany

Required space including safety distances (EN 1176):

Diameter 800 cm

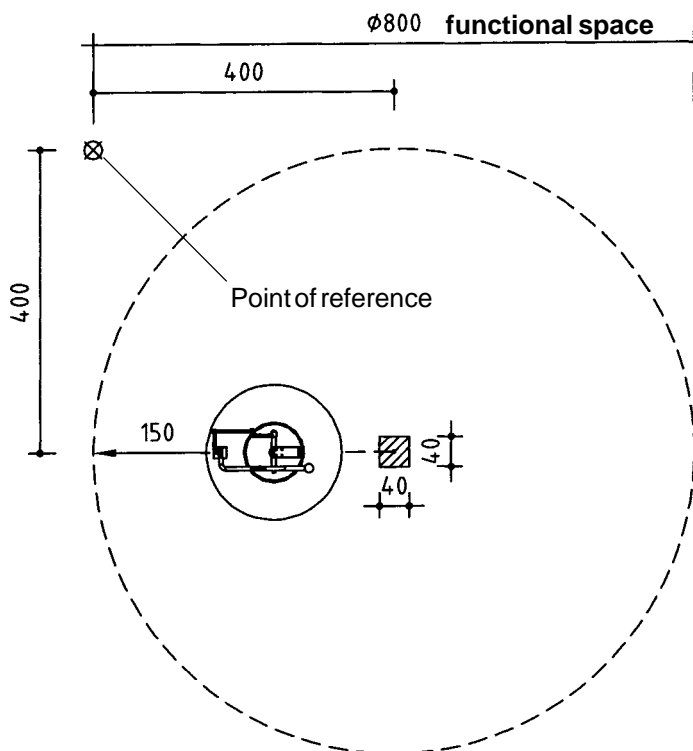
Pay particular attention not to place the equipment within the safety area of other playground equipments

Ground elevation

Scale 1:100
all dimensions in cm

Foundation block

1 piece 40 x 40 x 40 cm
Excavation depth 80 cm




Recommended assembly aids:

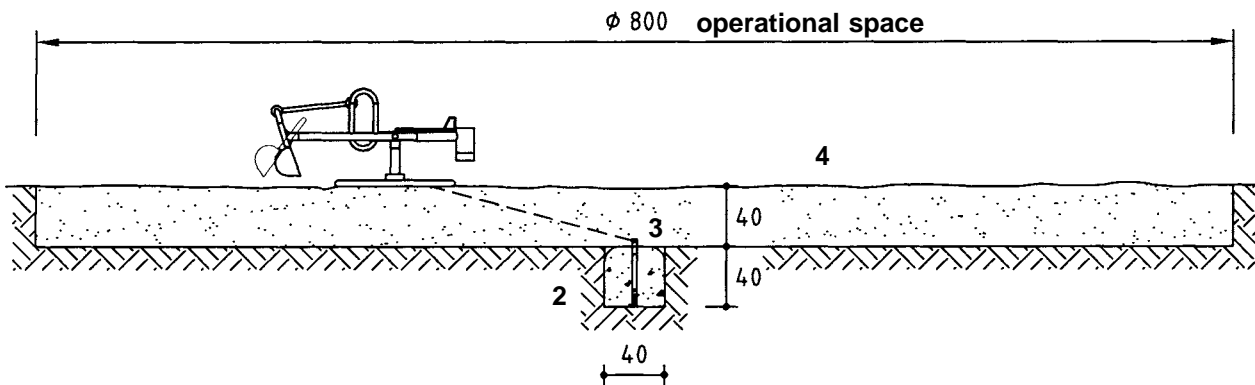
- Set of carpenter's tools
- Set of ratchets
- Torx inserts T 20, 25, 30, 40, 50
- Rubber mallet

Attention!

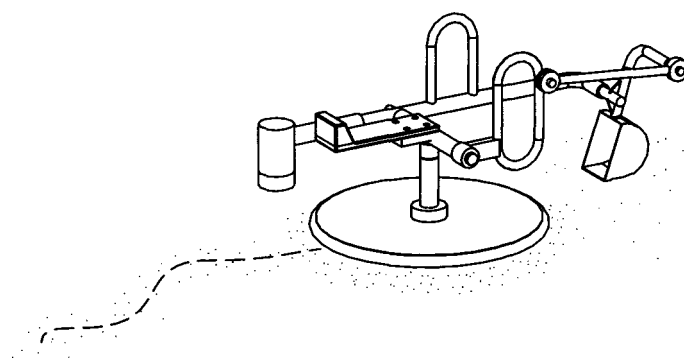
During the assembly period (including the setting of the concrete) it is not allowed to play on or put any weight on the equipment in order to secure stability during use after the assembly. Standard concrete requires at least 2 weeks to set.

Sequence of assembly operations:

1. Locate the site and take into account the space required, including the safety distances, according to the ground elevation on page 1.
2. Start surveying at the point of reference  and dig out the foundation holes.
3. Cast the anchoring chain and the foundation iron in concrete. **Pay particular attention to the special sheet on foundations.**
4. After the concrete has set cover the function space with a 40 cm thick layer of play sand (approx. Ø 8 m) and place the excavator about 1.50 m out of the centre. Fasten the excavator to the chain.



5. Repair minor damages caused during assembly or transportation.
6. Please ensure that all assembly aids, e. g. excess bolts, assembly instructions, distance battens or tape are removed entirely from the play equipment and the playground after work is finished.



Please note that after about 6 weeks all screws and bolts need to be checked and, if necessary, retightened.