

General hints:

A. Intended age range

This equipment is suitable for all age groups from 3 years.

B. Surfacing requirements

Pavement, e. g. slabs or tiles, with drainage.

This piece of equipment is intended for children to play with, rather than on, and therefore has no intended body support. No free height of fall is thereby stipulated.

C. Foundations

Please see detailed instructions at the end of this document.

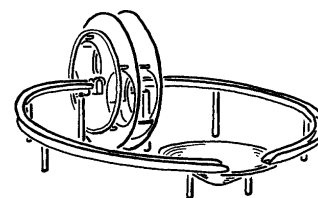
Special information:

Tested by TÜV Product Service GmbH.

Please do not alter any parts of the equipment or the construction itself since this may affect the safety standards and your guarantee.

We reserve the right to make technical alterations! For further information please call your local agent.

Water Scoop
Order no. 5.42010



Data for shipment:

Number of parts: 5

- 1 water scoop with bearings
- 1 alternating water runoff
- 2 water channels
- 1 flow dish

Total weight: 130 kg
Largest single part: 130 kg

En-EN 19.08.2002

Copyright © Richter Spielgeräte GmbH * 83112 Frasdorf * Germany

Required space including safety distances (EN 1176):

265 x 290 cm

Ground elevation

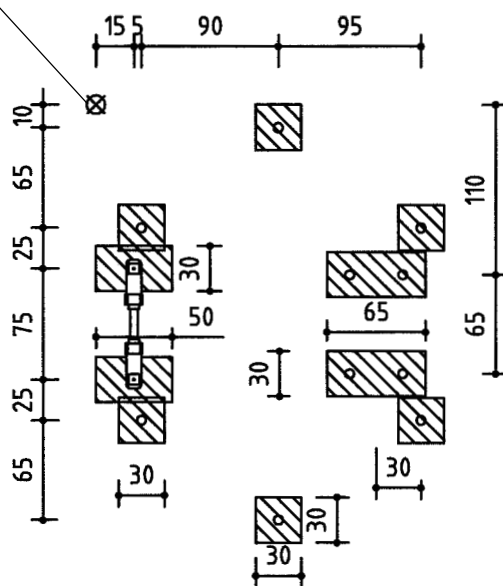
Scale 1:50

all dimensions in cm

Foundation blocks

- 6 pieces 30 x 30 x 40 cm
- Excavation depth 60 cm
- 2 pieces 30 x 65 x 40 cm
- Excavation depth 60 cm
- 2 pieces 30 x 50 x 40 cm
- Excavation depth 60 cm

Point of reference



Recommended assembly aids:

- Set of ratchets
- Set of allen keys
- Rubber mallet


Attention!

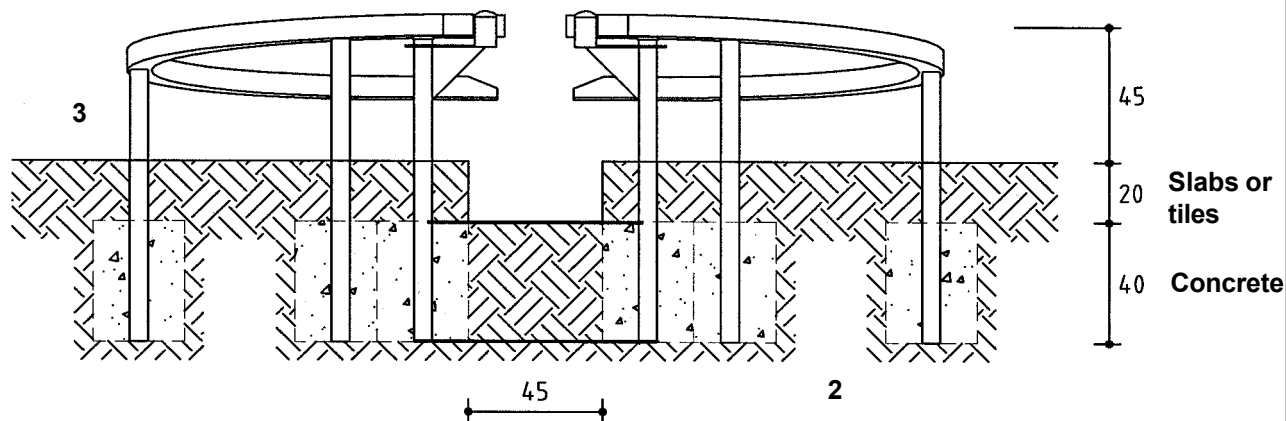
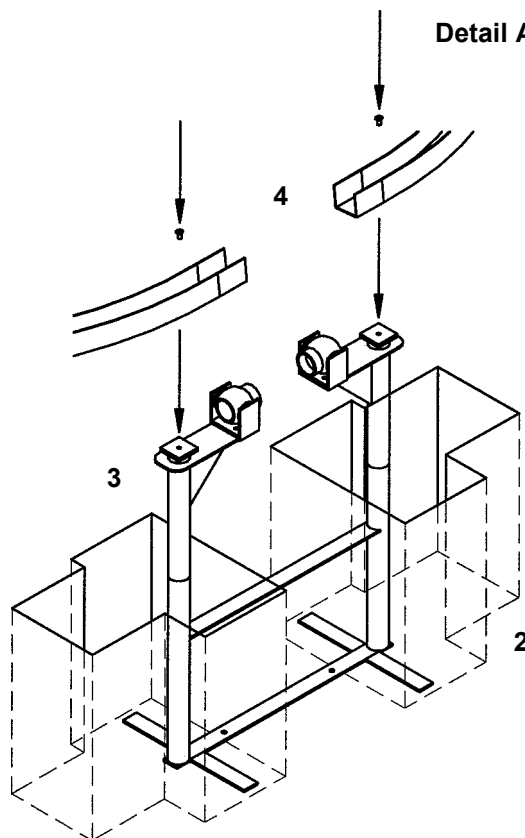
During the assembly period (including the setting of the concrete) it is not allowed to play on or put any weight on the equipment in order to secure stability during use after the assembly. Standard concrete requires at least 2 weeks to set.

General note

We recommend to install the Water Scoop and, at the same time, built up a water channel and/or basin of bricks. The water scoop must reach approx 15 cm into the water. A clearance of 5 cm below the water scoop is required.

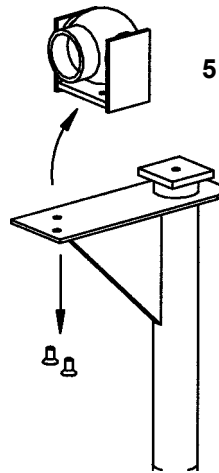
Sequence of assembly operations:

1. Locate the site and take into account the space required, including the safety distances, according to the ground elevation on page 1.
2. Start surveying at the point of reference  and dig out the foundation holes.
3. Place the support frame of the water scoop and of the water channels into the foundation holes and align.
4. Screw the water channels (**detail A**) onto the support frame of the water scoop.

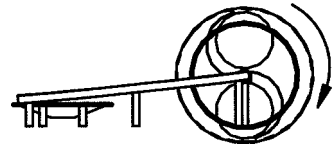


- Remove one of the bearings (**detail B**) and install the water scoop complete with axle, to achieve the direction of rotation shown in (**detail C**).

Detail B

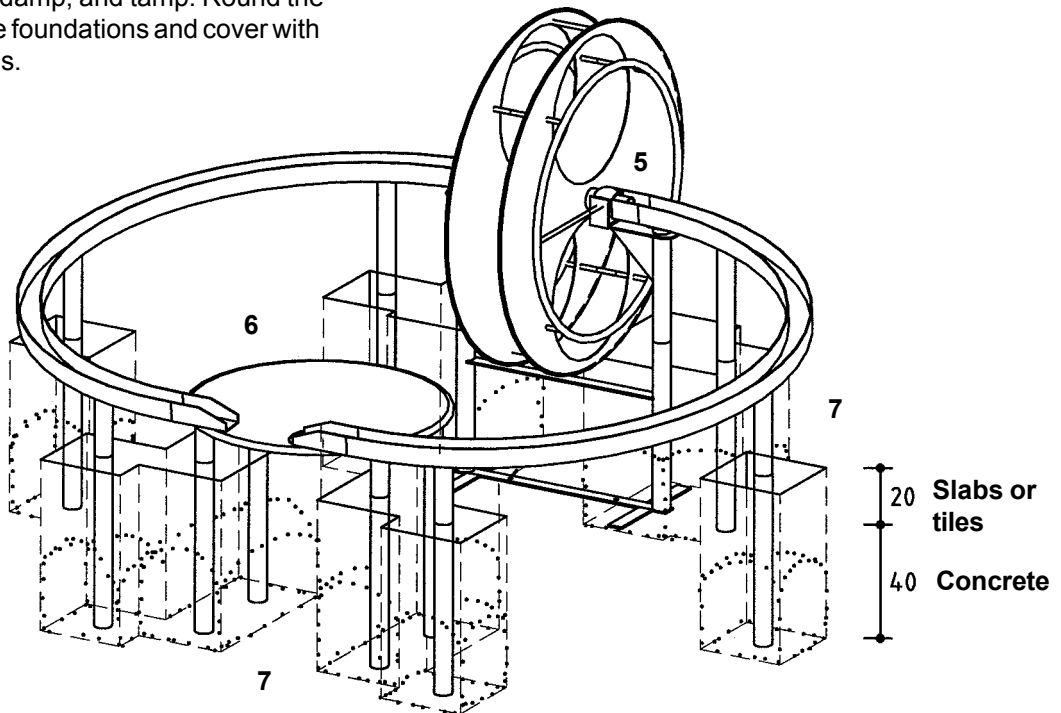


Detail C

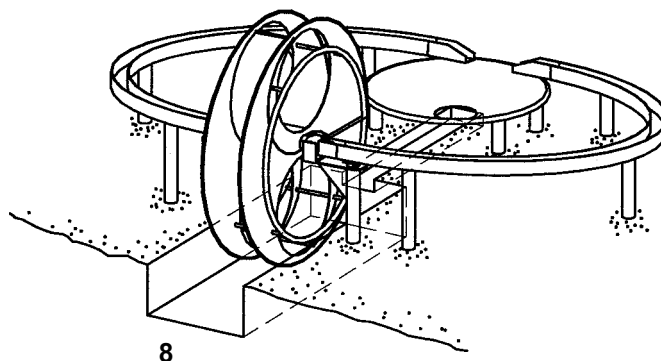


- Place the flow dish into the foundation holes and align.

- Fill the foundation holes with concrete B 25, earth damp, and tamp. Round the edges of the foundations and cover with slabs or tiles.



8. Build a water channel and/or basin of bricks
(at least 45 cm wide).



9. Repair minor damages caused during assembly or transportation.

10. Please ensure that all assembly aids, e. g. excess bolts, assembly instructions, distance battens or tape are removed entirely from the play equipment and the playground after work is finished.

Please note that after about 6 weeks all screws and bolts need to be checked and, if necessary, retightened.