

General hints:

A. Intended age range

This equipment is suitable for children from 4 years.

B. Surfacing requirements

This equipment does not reach the free height of fall limit of 600 mm above which a specific requirement for impact absorbing surfacing or materials is necessary.

C. Foundations

Please see detailed instructions at the end of this document.

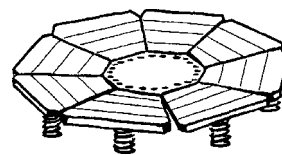
Special information:

Tested by TÜV Product Service GmbH.

Please do not alter any parts of the equipment or the construction itself since this may affect the safety standards and your guarantee.

We reserve the right to make technical alterations!
For further information please call your local agent.

**Bouncing Flower
Order no. 6.06500**



Data for shipment:

Number of parts: 2

- 1 Bouncing Flower
- 1 foundation frame

Total weight: 250 kg
Largest single part: 230 kg

En-EN 29.12.2001

Copyright © Richter Spielgeräte GmbH * 83112 Frasdorf * Germany

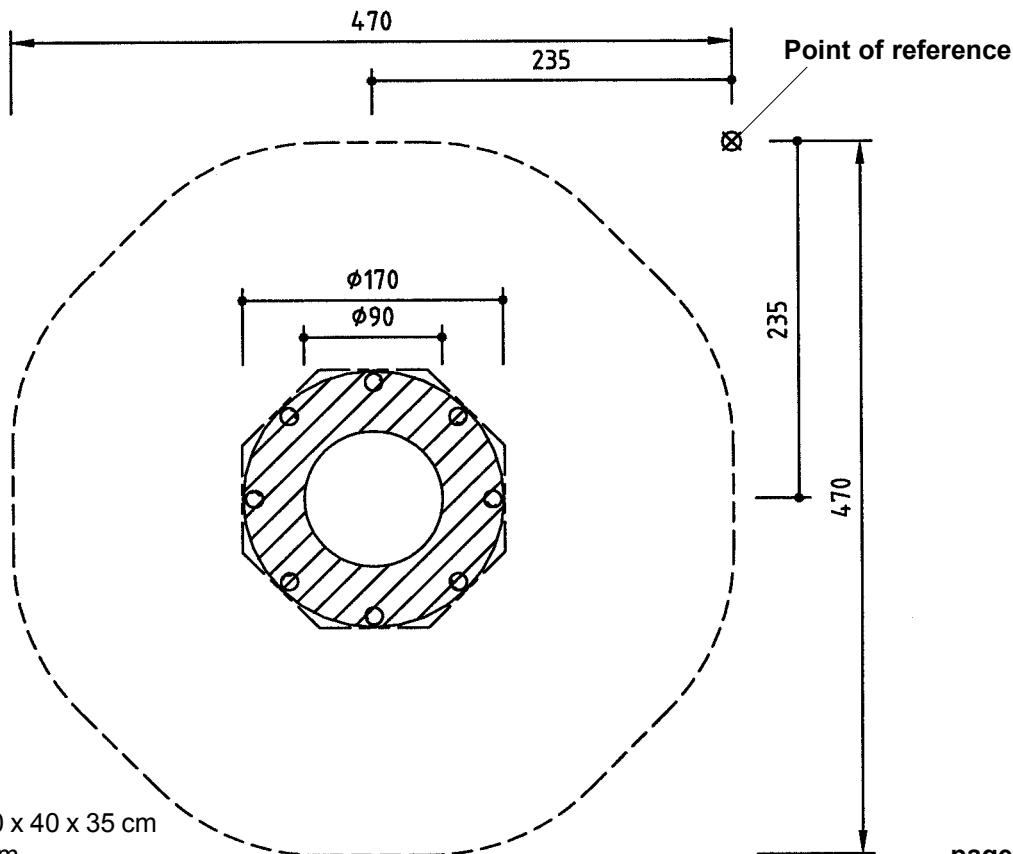
Required space including safety distances (EN 1176):

470 x 470 cm

Ground elevation

Scale 1:50

all dimensions in cm



Foundation block

Ring foundation Ø 130 x 40 x 35 cm
Excavation depth 45 cm


Recommended assembly aids:

- 1 set of ratchets
- Small excavator

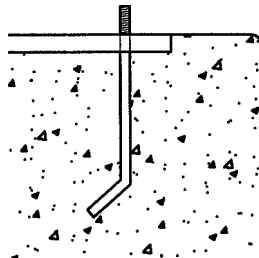
Attention!

During the assembly period (including the setting of the concrete) it is not allowed to play on or put any weight on the equipment in order to secure stability during use after the assembly. Standard concrete requires at least 2 weeks to set.

Sequence of assembly operations:

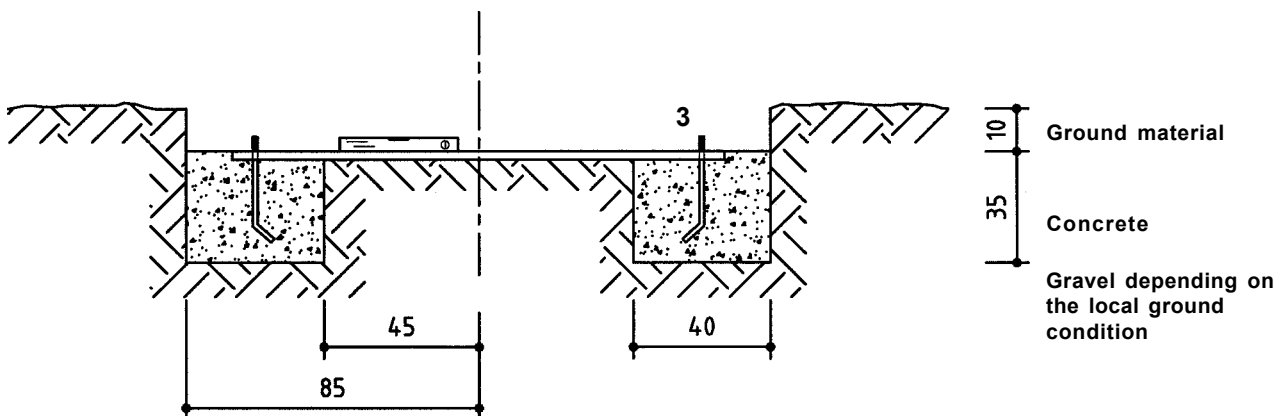
1. Locate the site and take into account the space required, including the safety distances, according to the ground elevation on page 1.
2. Start surveying at the point of reference , dig out the foundation holes and fill with concrete B 25, earth damp, and tamp. Round the edges of the foundations.
3. Place the frame in the foundation and level the surface of the concrete.
(Please note the detail opposite).

Detail

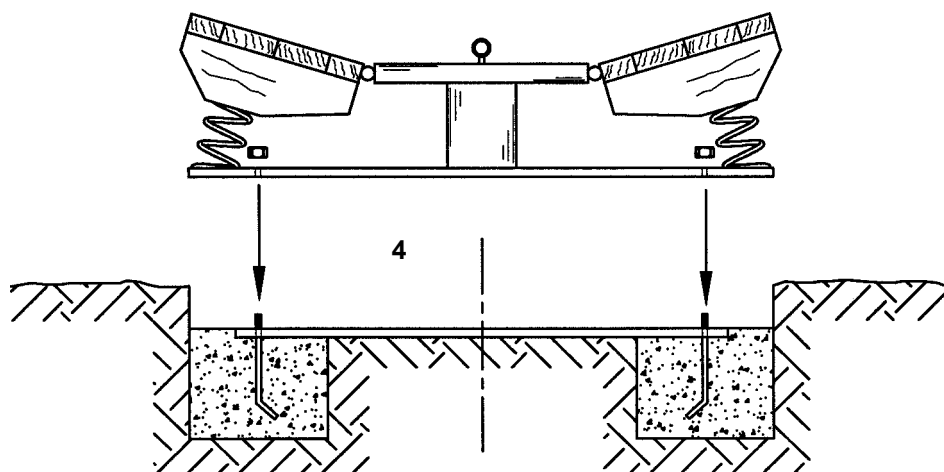


Attention!

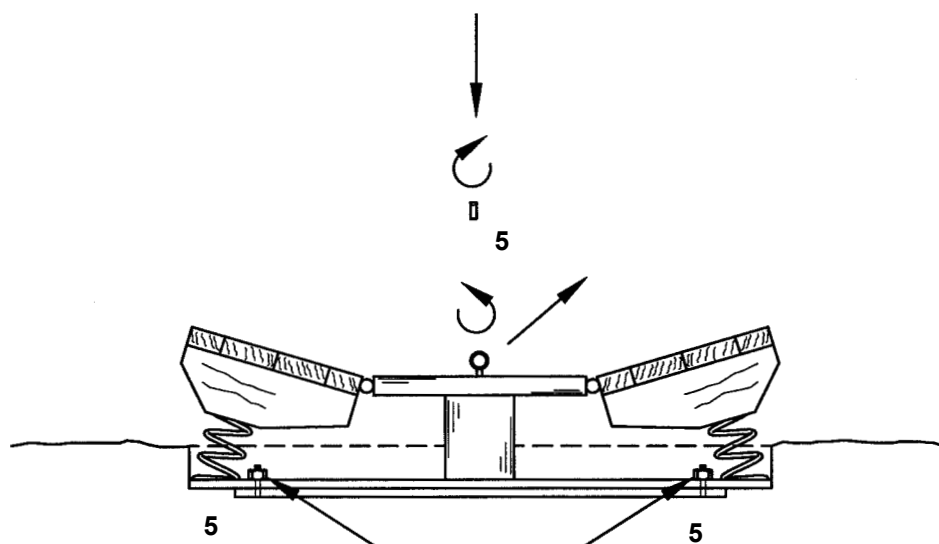
Edge of steel profile = Upper edge of foundation
(use as an aid to level the surface of the foundation)



4. After the concrete has set install the equipment.



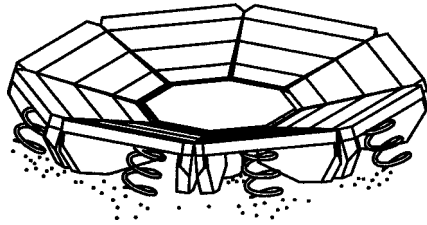
5. Screw the equipment onto the foundation frame.
Exchange the eyelet bolt with the supplied grub screw.



6. Cover the foundation with ground material.

7. Repair minor damages caused during assembly or transportation.

8. Please ensure that all assembly aids, e. g. excess bolts, assembly instructions, distance battens or tape are removed entirely from the play facility and the playground after work is finished.



Please note that after about 6 weeks all screws and bolts need to be checked and, if necessary, retightened.