

General hints:

A. Surfacing requirements

This equipment does not reach the free height of fall limit of 600 mm above which a specific requirement for impact absorbing surfacing or materials is necessary.

B. Foundations

Please see detailed instructions at the end of this document.

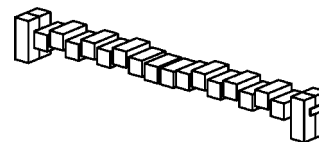
Special information:

Tested by TÜV Product Service GmbH.

Please do not alter any parts of the equipment or the construction itself since this may affect the safety standards and your guarantee.

We reserve the right to make technical alterations!
For further information please call your local agent.

Balance Blocks
Order no. 6.51700



Data for shipment:

Number of parts: 3

1 bundle: Walkway with bracing beams
2 support frames

Total weight: 250 kg
Heaviest single part: 140 kg
Largest single part: 3.30 m x 0.40 x 0.40 m

En-EN 06.02.2007

Copyright © Richter Spielgeräte GmbH * 83112 Frasdorf * Germany

Required space including safety distances (EN 1176):

685 x 340 cm

Ground elevation

Scale 1:50

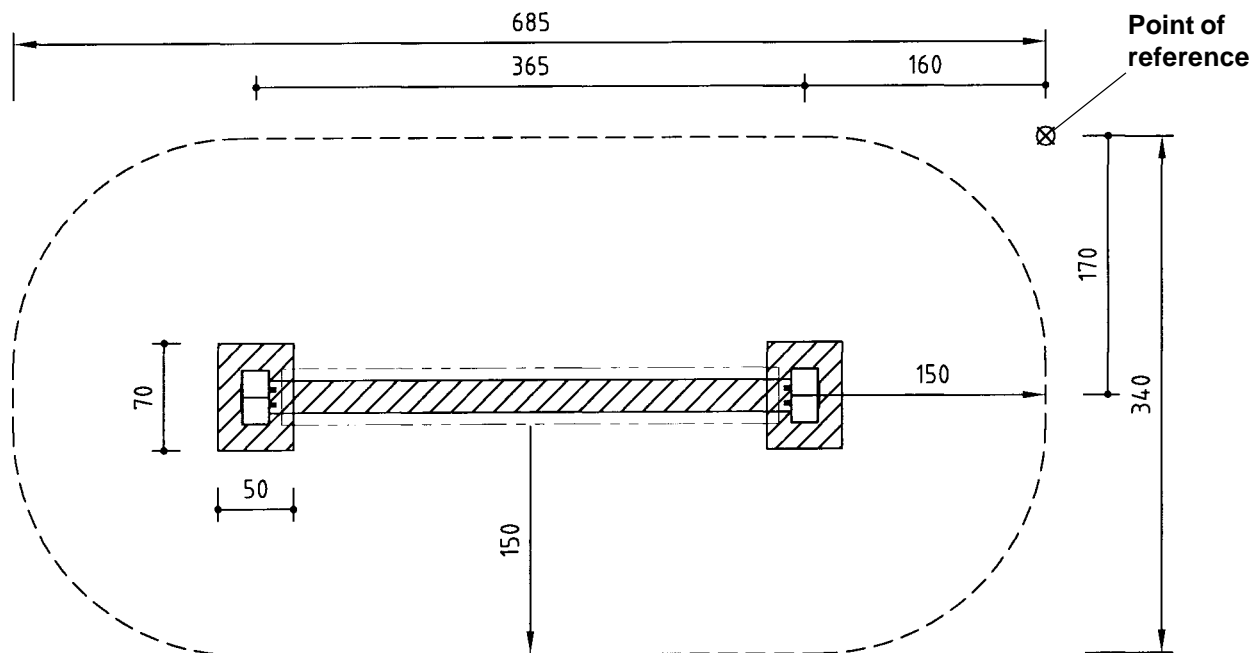
all dimensions in cm

Foundation blocks

Quality of concrete C 25/30

2 pieces 50 x 70 x 55 cm

Excavation depth 75 cm



Recommended assembly tools:

- Set of carpenter's tools
- Set of ratchets
- Battens and beams for support during assembly

Attention!

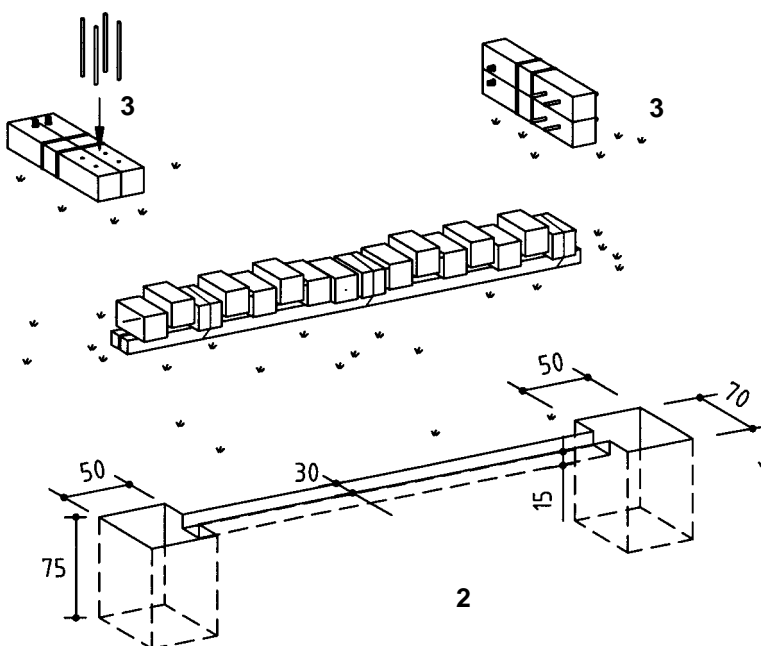
During the assembly period (including the setting of the concrete) it is not allowed to play on or put any weight on the equipment in order to secure stability during use after the assembly. Standard concrete requires at least 2 weeks to set.

Sequence of assembly operations:

1. Locate the site and take into account the space required, including the safety distances, according to the ground elevation on page 1.

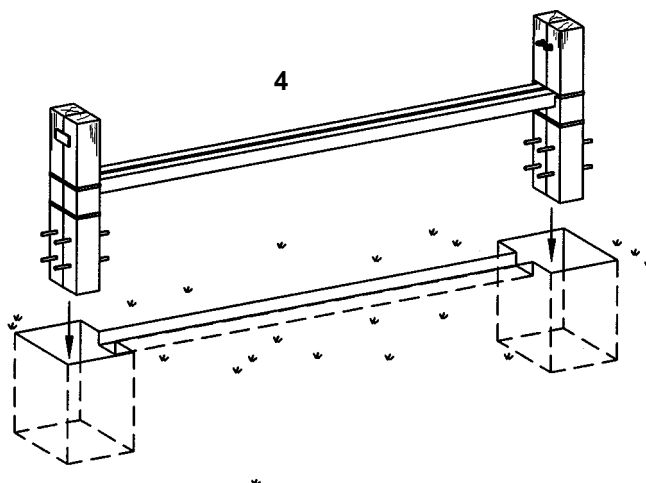
2. Start surveying at the point of reference \otimes and dig out the foundation holes.

The ditch between the two foundation holes must be 30 cm wide and 15 cm deep.



3. Hammer the anchoring irons into the support posts.

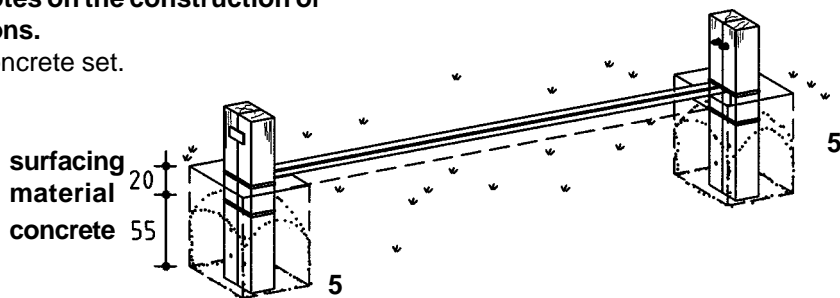
4. Insert the longitudinal beam with pins into the pre-drilled holes in the support posts. Place the entire equipment into the foundation holes (depth of installation is marked) and align.



- Fill the foundation holes with concrete, tamp and round the edges.

Please pay attention to the special sheet: Notes on the construction of foundations.

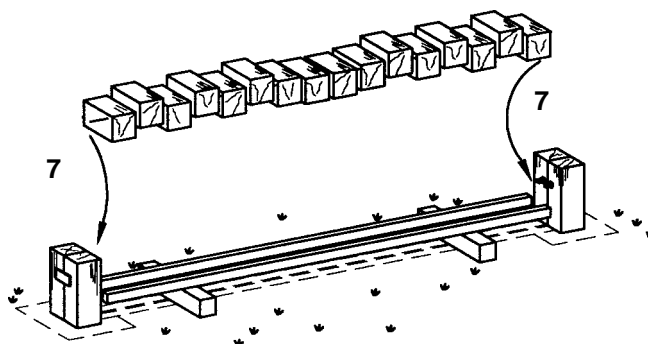
Let the concrete set.



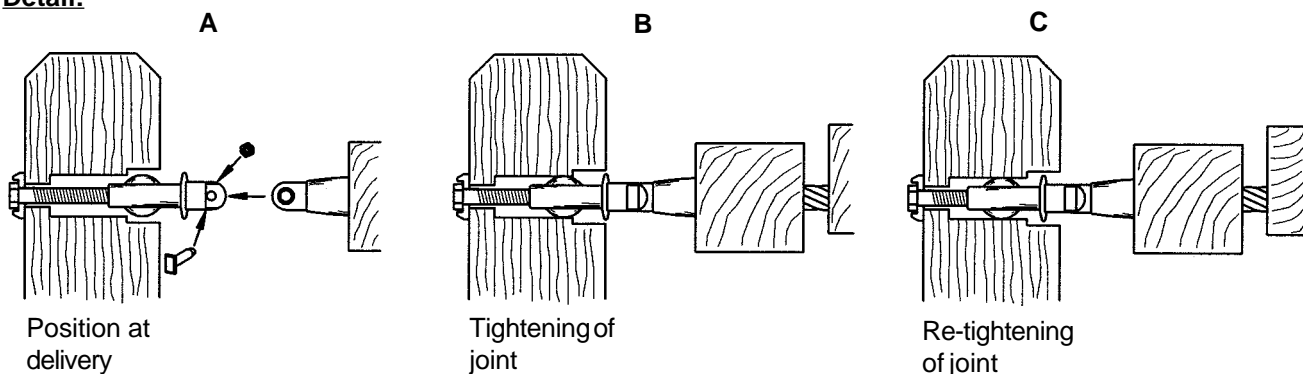
- Cover the foundations up to ground level with surfacing material.

- Place assembly battens (crosswise on two beams) in between the support frames and hook in the walkway at the support frames. The forked joint is in position

A (see detail) at delivery. After installation of the walkway tighten the joints until position **B (see detail)**.



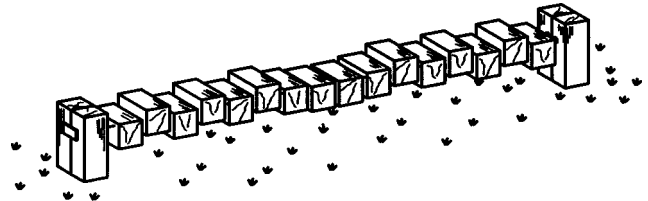
Detail:



Maintenance:

The walkway can be re-tightened by 2 cm on each side - see point C (detail).

8. Repair minor damages caused during assembly or transportation.
9. Please ensure that all assembly aids, e. g. excess bolts, assembly instructions, distance battens or tape are removed entirely from the play equipment and the playground after work is finished.



Please note that after about 6 weeks all screws and bolts need to be checked and, if necessary, retightened.