

General hints:

A. Surfacing requirements

This element does not reach the free height of fall limit of 600 mm above which a specific requirement for impact absorbing surfacing or materials is necessary.

B. Foundations

Please see detailed instructions at the end of this document, especially depths of foundations for steel feet.

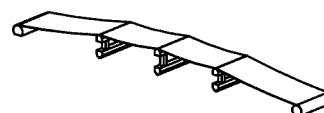
Special information:

Tested by TÜV Product Service GmbH.

Please do not alter any parts of the equipment or the construction itself since this may affect the safety standards and your guarantee.

We reserve the right to make technical alterations!
For further information please call your local agent.

Musical path
Order no. 9.02420



textile reinforced
Order no. 9.02440

Data for shipment:

Number of parts: 4

- 1 steel reinforced rubber belt
- 1 bundle: distance battens
- 1 bundle: support frames
- 1 bundle: steel feet and fittings

Total weight: 300 kg
Largest single part: 150 kg

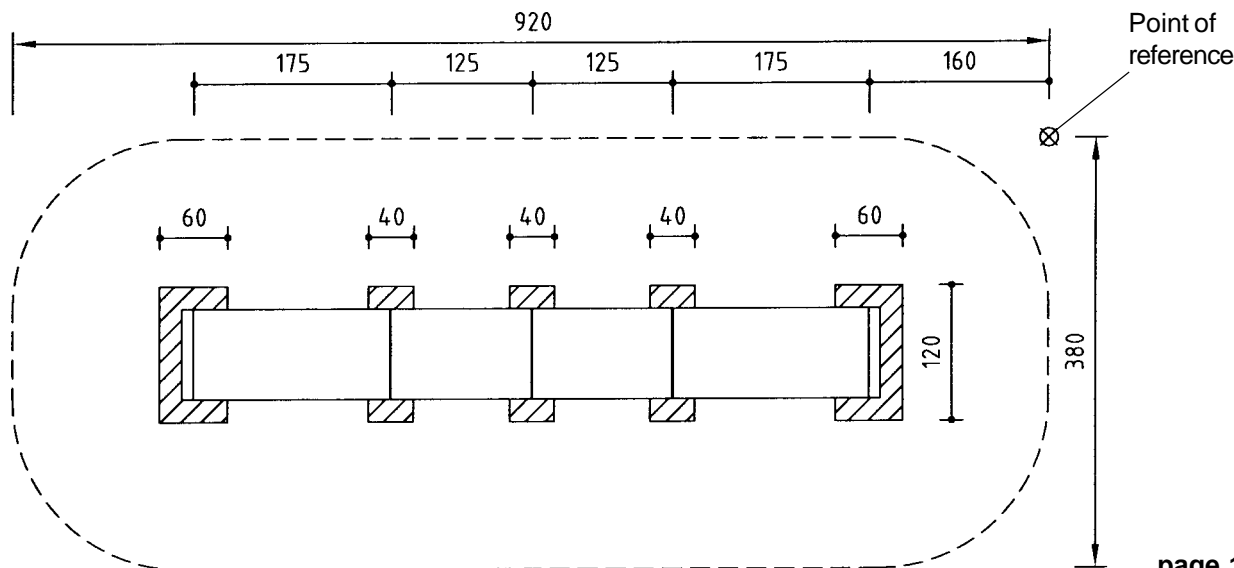
Required space including safety distances (EN 1176):
920 x 380 cm

Ground elevation
no scale
all dimensions in cm

Foundation blocks
Quality of concrete C 25/30

3 pieces 120 x 40 x 30 cm
Excavation depth 50 cm

2 pieces 120 x 60 x 60 cm
Excavation depth 80 cm




Recommended assembly tools:

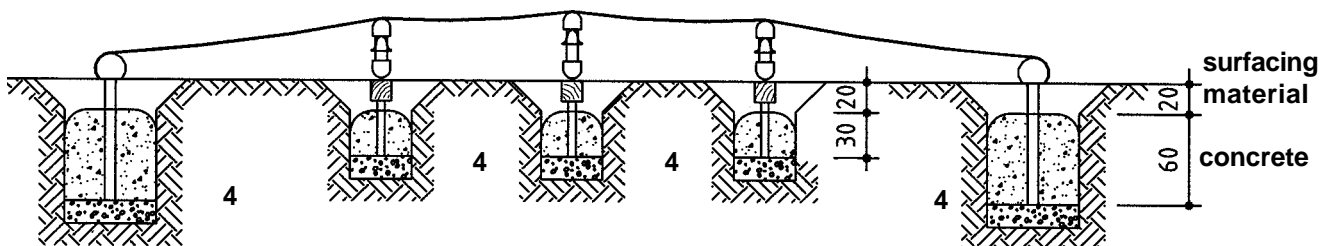
- Set of carpenter's tools
- Set of ratchets
- Screw driver for Phillips screws
- Rubber mallet

Attention!

During the assembly period (including the setting of the concrete) it is not allowed to play on or put any weight on the equipment in order to secure stability during use after the assembly. Standard concrete requires at least 2 weeks to set.

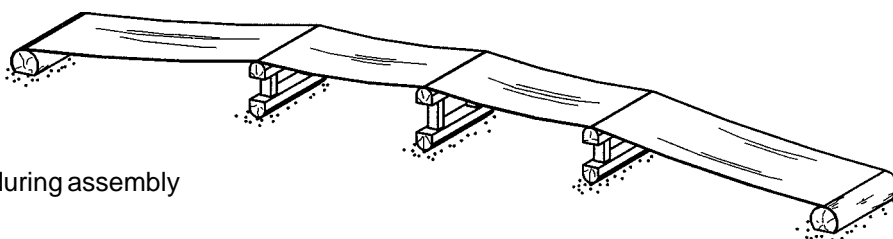
Sequence of assembly operations:

1. Locate the site and take into account the space required, including the safety distances, according to the ground elevation on page 1.
2. Start surveying at the point of reference  and dig out the foundation holes. Please take care to install the equipment on level ground to ensure correct function.
3. Unfold the distance battens and attach to the side of the equipment at the marked spots.



4. Place the complete equipment into the foundation holes. Fill the foundation holes with concrete (according to sketch), tamp and round the edges. Cover the foundation with surfacing material.

Please pay attention to the additional sheet on the construction of foundations.



5. Repair minor damages caused during assembly or transportation.
6. Please ensure that all assembly aids, e. g. excess bolts, assembly instructions, distance battens or tape are removed entirely from the play equipment and the playground after work is finished.

Please note that after about 6 weeks all screws and bolts need to be checked and, if necessary, retightened.