

General hints:

A. Intended age range

This equipment is suitable for children from 6 years.

B. Surfacing requirements

This equipment does not reach the free height of fall limit of 600 mm above which a specific requirement for impact absorbing surfacing or materials is necessary.

C. Foundations

Please see detailed instructions at the end of this document.

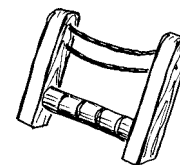
Special information:

Tested by TÜV Product Service GmbH.

Please do not alter any parts of the equipment or the construction itself since this may affect the safety standards and your guarantee.

We reserve the right to make technical alterations!
For further information please call your local agent.

Sound Roller
Order no. 9.02430



Data for shipment:

Number of parts: 1

1 bundle: 2 posts, 1 sound roller

Total weight: 250 kg
Largest single part: 120 kg

Required space including safety distances (EN 1176):

230 x 300 cm

Ground elevation

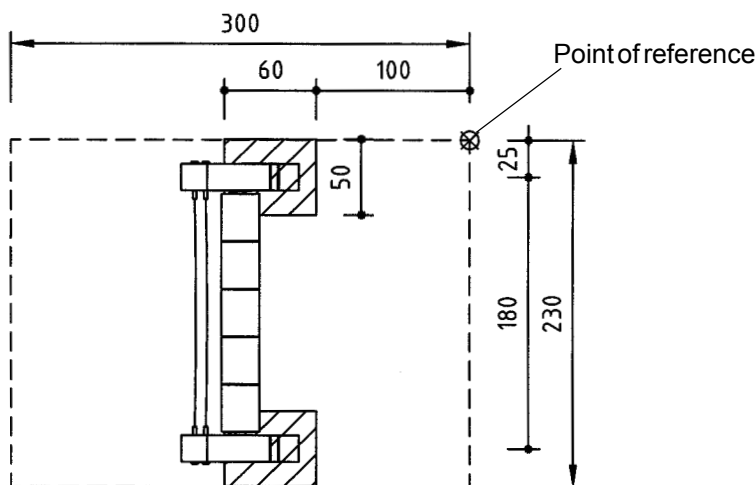
Scale 1:50

all dimensions in cm

Foundation blocks

2 pieces 50 x 60 x 60 cm

Excavation depth 80 cm



Recommended assembly aids:


- Set of carpenter's tools
- Set of ratchets
- Rubbe mallet
- Battens for support during assembly

Attention!

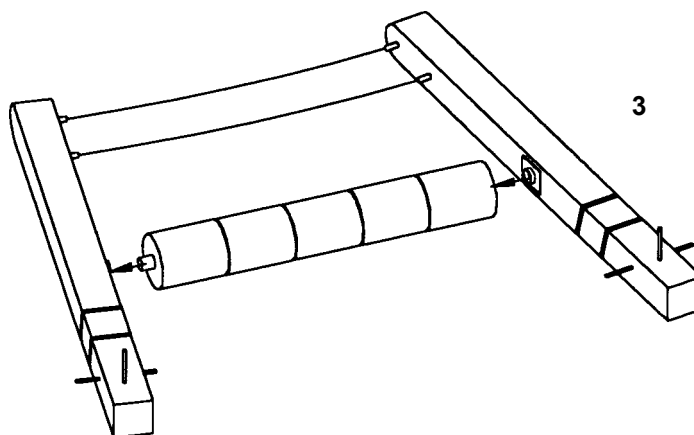
During the assembly period (including the setting of the concrete) it is not allowed to play on or put any weight on the equipment in order to secure stability during use after the assembly. Standard concrete requires at least 2 weeks to set.

Sequence of assembly operations:

1. Locate the site and take into account the space required, including the safety distances, according to the ground elevation on page 1.

2. Start surveying at the point of reference  and dig out the foundation holes.

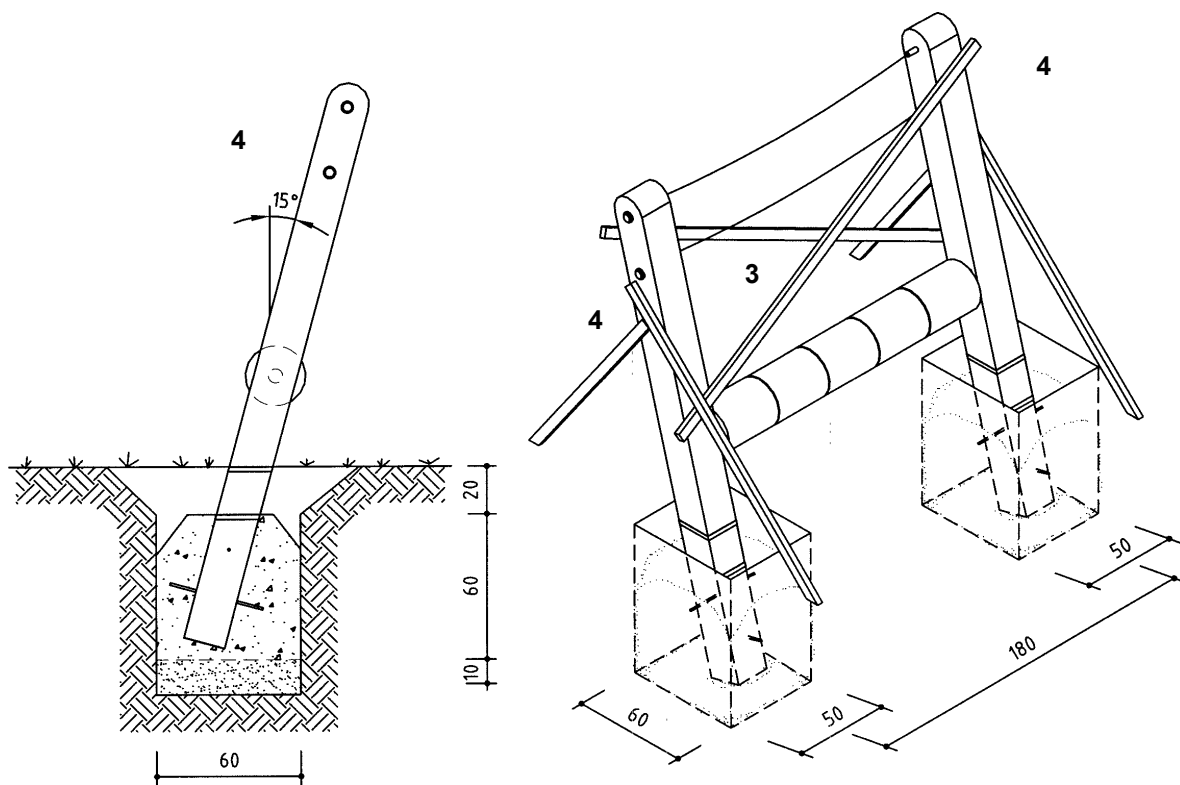
3. Insert the rollers into the flanges on the posts, secure with the screws and hold in position at right angles with respect to each other by attaching bracing battens.



- Place the entire equipment into the foundation holes and align at an angle of 15° . Support in this position using bracing battens.

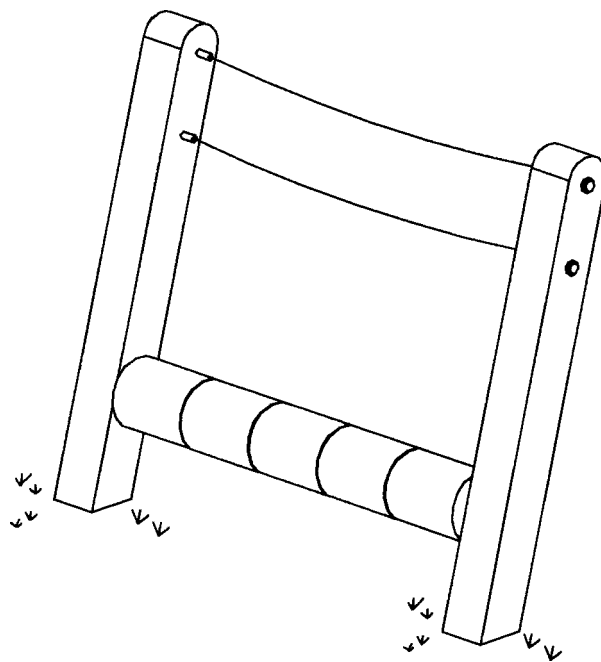
Important!

Before casting the concrete ensure that the equipment is not warped and the rollers move smoothly.



- Fill the foundation holes with concrete B 25, earth damp, and tamp. Round the edges of the foundations and cover with ground material.

6. Repair minor damages caused during assembly or transportation.
7. Please ensure that all assembly aids, e. g. excess bolts, assembly instructions, distance battens or tape are removed entirely from the play equipment and the playground after work is finished.



Please note that after about 6 weeks all screws and bolts need to be checked and, if necessary, retightened.