

General hints:

A. Intended age range

This equipment is suitable for children from from 5 years.

B. Surfacing requirements

This equipment does not reach the free height of fall limit of 600 mm above which a specific requirement for impact absorbing surfacing or materials is necessary.

C. Foundations

Please see detailed instructions at the end of this document.

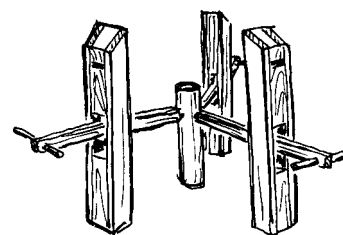
Special information:

Tested by TÜV Product Service GmbH.

Please do not alter any parts of the equipment or the construction itself since this may affect the safety standards and your guarantee.

We reserve the right to make technical alterations!
For further information please call your local agent.

Wind Pump
Order no. 9.02500



Data for shipment:

Number of parts: 6

- 3 pump columns
- 1 bundle: 3 pump handles
- 1 centre column
- 1 bundle: gauge battens

Total weight: 300 kg
Largest single part: 90 kg

En-EN 21.10.2002

Copyright © Richter Spielgeräte GmbH * 83112 Frasdorf * Germany

Required space including safety distances (EN 1176):

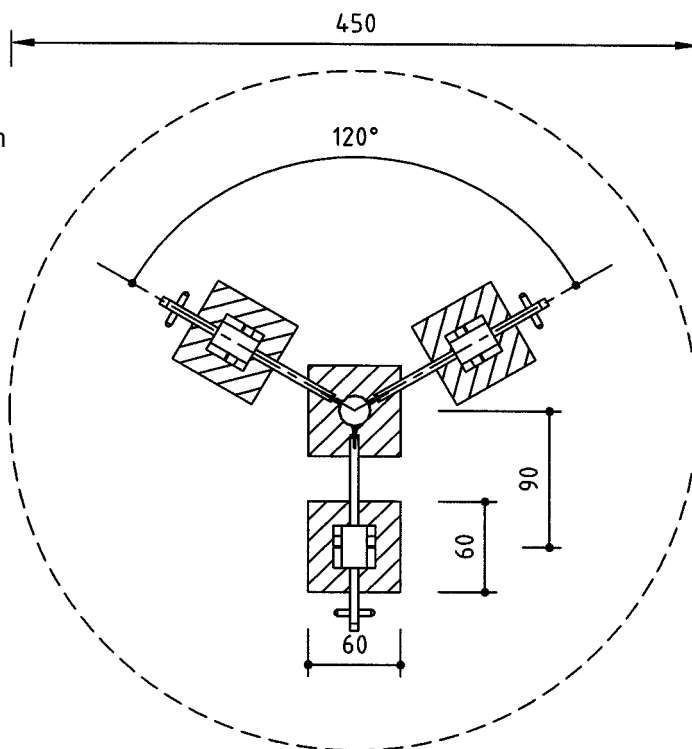
Diameter 450 cm

Ground elevation

Scale 1:50
all dimensions in cm

Foundation blocks

- 3 pieces 60 x 60 x 50 cm
- Excavation depth 70 cm
- 1 piece 60 x 60 x 60 cm
- Excavation depth 80 cm



Recommended assembly aids:

- Set of carpenter's tools
- Set of ratchets
- Rubber mallet
- Spanner 13 and 17 mm

Attention!

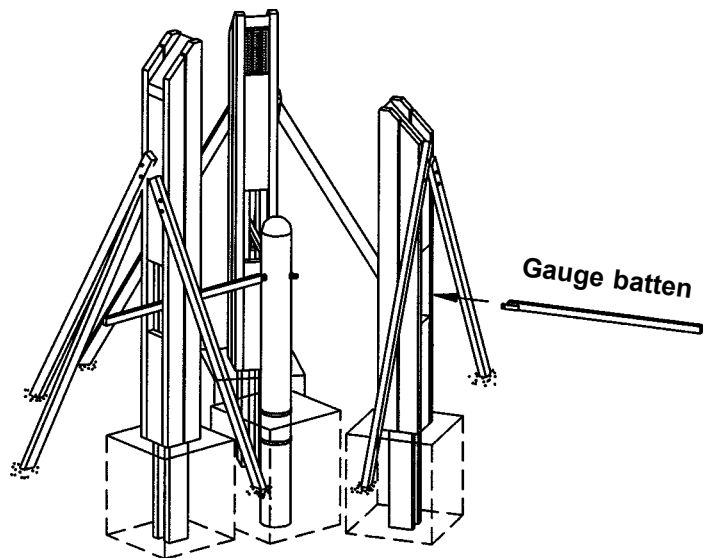
During the assembly period (including the setting of the concrete) it is not allowed to play on or put any weight on the equipment in order to secure stability during use after the assembly. Standard concrete requires at least 2 weeks to set.

Sequence of assembly operations:

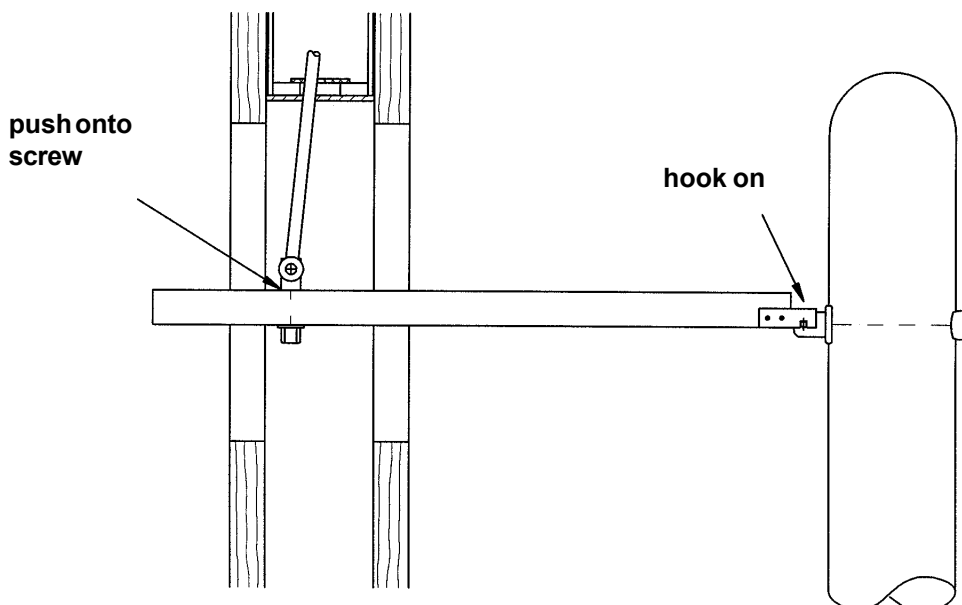
1. Locate the site and take into account the space required, including the safety distances, according to the ground elevation on page 1.
2. Dig out the foundation holes.
3. Erect the centre column and the pump columns, the distance to the centre column is determined by the supplied gauge battens (see detail).

Important note!

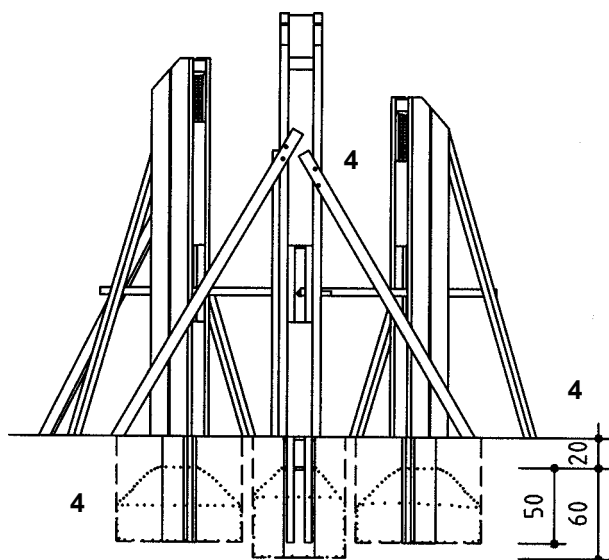
The gauge battens and finally the pump handles must pass exactly through the middle of the pump columns.



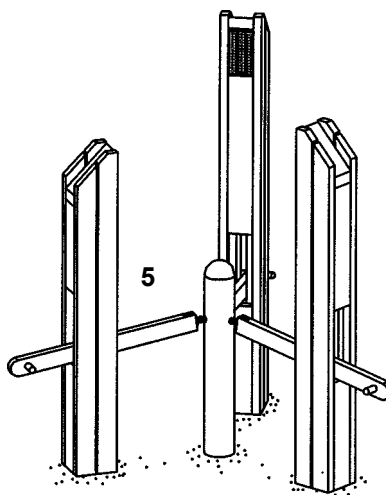
Detail



- Align the equipment, support in position with battens and fill the foundation holes with concrete B 25, earth damp, and tamp. Round the edges of the foundations and cover with ground material.



- After the concrete has set install the pump handles in the same way as the gauge battens (**detail**). Push the handles from the outside through the pump columns and screw onto both, the centre colum and the joints on the connecting rods.



6. Repair minor damages caused during assembly or transportation.

7. Please ensure that all assembly aids, e. g. excess bolts, assembly instructions, distance battens or tape are removed entirely from the play equipment and the playground after work is finished.

Please note that after about 6 weeks all screws and bolts need to be checked and, if necessary, retightened.