

**General hints:**

**A. Intended age range**

This equipment is suitable for children from from 6 years.

**B. Surfacing requirements**

This equipment does not reach the free height of fall limit of 600 mm above which a specific requirement for impact absorbing surfacing or materials is necessary.

**C. Foundations**

Please see detailed instructions at the end of this document.

**Special information:**

Tested by TÜV Product Service GmbH.

Please do not alter any parts of the equipment or the construction itself since this may affect the safety standards and your guarantee.

We reserve the right to make technical alterations!  
For further information please call your local agent.

**Sea Roarer**  
Order no. 9.02650



**Data for shipment:**

Number of parts: 1

Total weight: 50 kg

**Required space including safety distances (EN 1176):**

Diameter 320 cm

**Ground elevation**

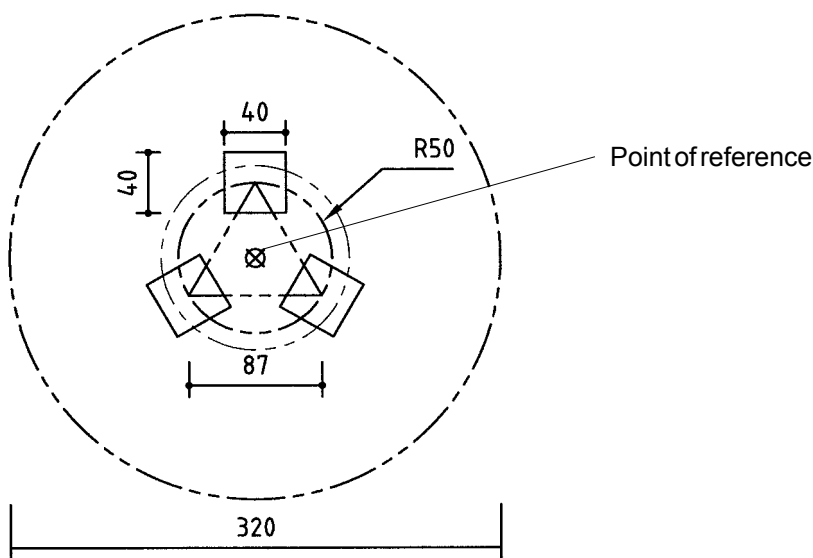
Scale 1:50

all dimensions in cm

**Foundation blocks**

3 pieces 40 x 40 x 35 cm

Excavation depth 40 cm




**Recommended assembly aids:**

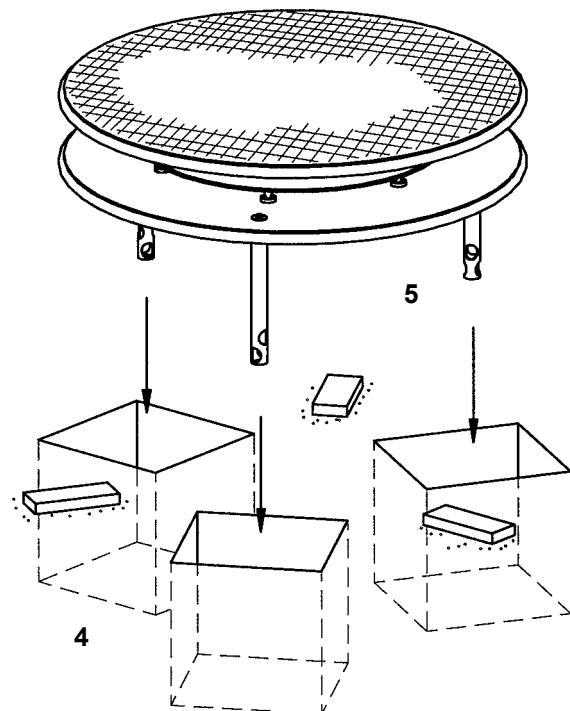
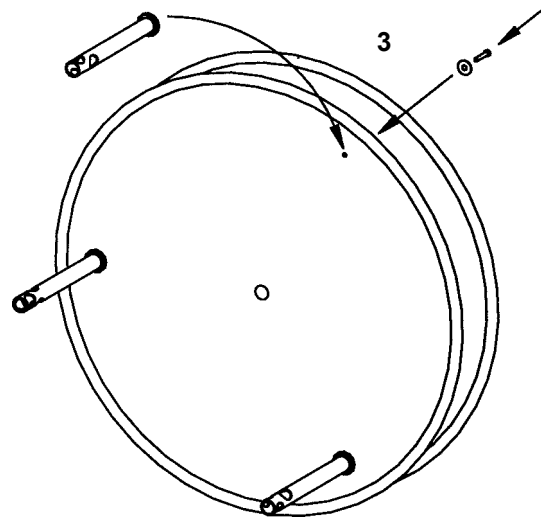
Open end spanner

**Attention!**

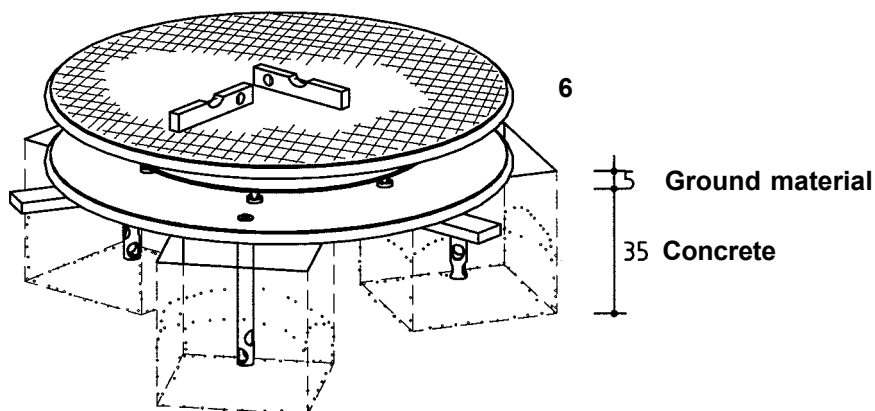
During the assembly period (including the setting of the concrete) it is not allowed to play on or put any weight on the equipment in order to secure stability during use after the assembly. Standard concrete requires at least 2 weeks to set.

**Sequence of assembly operations:**

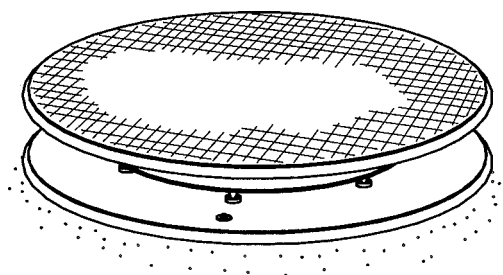
1. Locate the site and take into account the space required, including the safety distances, according to the ground elevation on page 1.
2. Start surveying at the point of reference  and dig out the foundation holes.
3. Screw the foundation anchors onto the equipment.
4. Fill the foundation holes with concrete B 25, earth damp.
5. Place the equipment in the foundation holes, the concrete still damp and align. Tamp the foundations and cover with ground material.



6. Attention! The equipment must be exactly level, check with spirit level.



7. Repair minor damages caused during assembly or transportation.
8. Please ensure that all assembly aids, e. g. excess bolts, assembly instructions, distance battens or tape are removed entirely from the play equipment and the playground after work is finished.



**Please note that after about 6 weeks all screws and bolts need to be checked and, if necessary, retightened.**