

General hints:

A. Intended age range

This equipment is suitable for children from 4 to 8 years.

B. Surfacing requirements

This equipment should be installed on an impact absorbing surfacing / loose fill material that accords with EN 1177 and is adequate for a maximum free height of fall of 1.00 m.

C. Foundations

Please see detailed instructions at the end of this document.

Special information:

Tested by TÜV Product Service GmbH.

Please do not alter any parts of the equipment or the construction itself since this may affect the safety standards and your guarantee.

We reserve the right to make technical alterations!
For further information please call your local agent.

Two-Storey Play House
Order no. E4.10500



Data for shipment:

Number of parts: 8

- 1 house with 2 roof sections
- 1 bundle stand posts
- 1 ladder
- 1 wall with window
- 1 closed wall
- 1 table
- 1 bundle: 2 benches
- 1 bag of bolts

Total weight: 380 kg
Largest single part: 250 kg
1.25 x 1.40 x 1.00 m

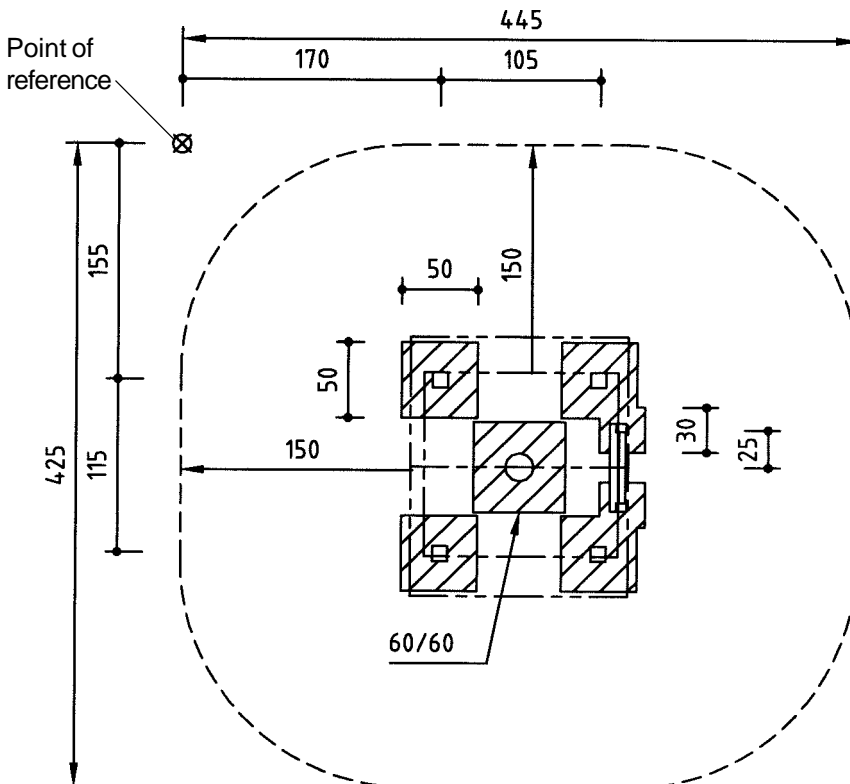
En-EN 07.07.2003

Copyright © Richter Spielgeräte GmbH * 83112 Frasdorf * Germany

Required space including safety distances (EN 1176):
445 x 425 cm

Ground elevation
Scale 1:50
all dimensions in cm

- Foundation blocks**
- House:**
4 pieces 50 x 50 x 50 cm
Excavation depth 70 cm
 - Ladder:**
2 pieces 30 x 30 x 30 cm
Excavation depth 50 cm
 - Table:**
1 piece 60 x 60 x 40 cm
Excavation depth 60 cm




Recommended assembly aids:

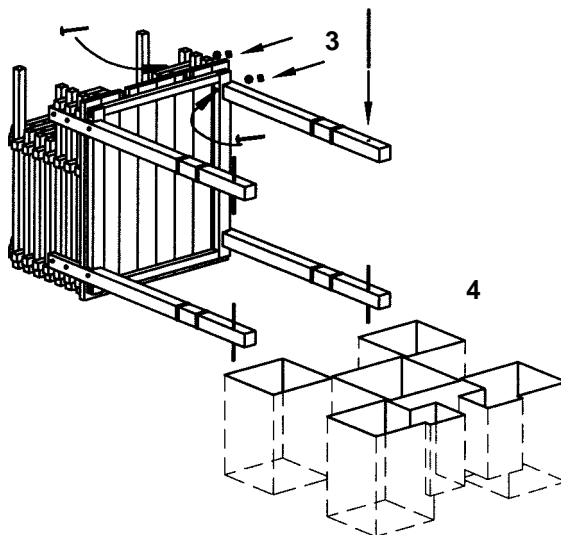
- Set of carpenter's tools
- Set of ratchets
- Support battens

Attention!

During the assembly period (including the setting of the concrete) it is not allowed to play on or put any weight on the equipment in order to secure stability during use after the assembly. Standard concrete requires at least 2 weeks to set.

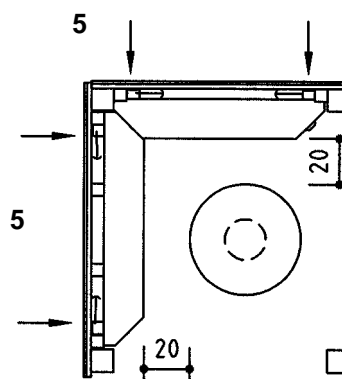
Sequence of assembly operations:

1. Locate the site and take into account the space required, including the safety distances, according to the ground elevation on page 1.
2. Start surveying at the point of reference  and dig out the foundation holes.
3. Place the House on its back. Hammer the foundation irons into the stand posts. Screw the stand posts onto the House (Mushroom head bolt).
4. Place the House in the foundation holes and align.



5. Insert the rear and side walls between the stand posts from the outside. Screw the beams onto the stand posts (Hexagonal head capwood screw) **see detail**.
6. Screw the brackets for the benches through the sides onto the beams.
7. Place the table into the foundation hole.

Detail



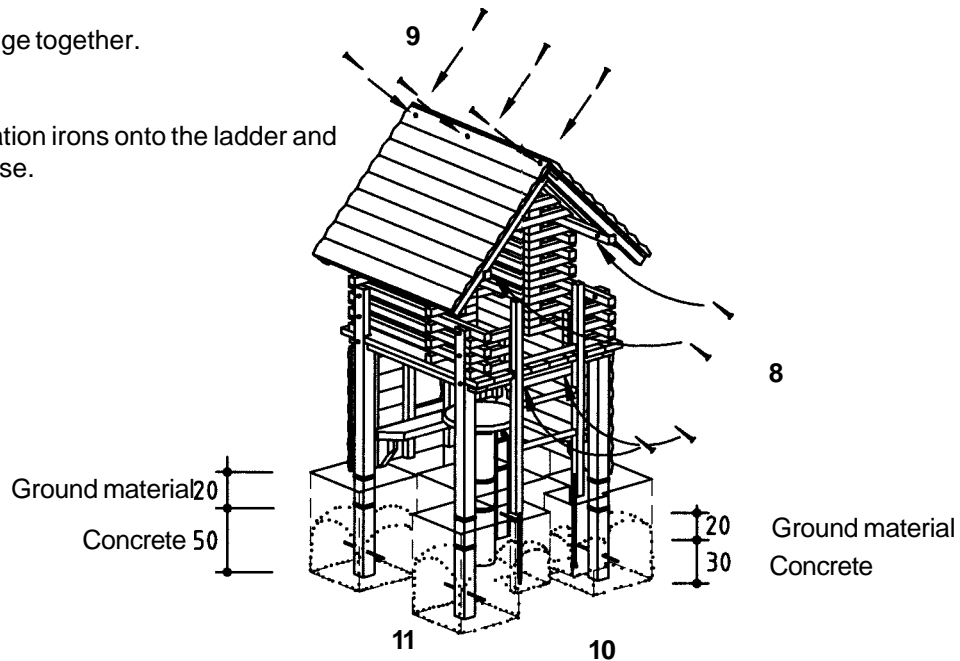
Attention!

In order to accurately install the roof, the House must be exactly aligned both horizontally and vertically.

8. Position the roof panels and screw onto the top square-sectioned timbers of the House.

9. Screw the roof ridge together.

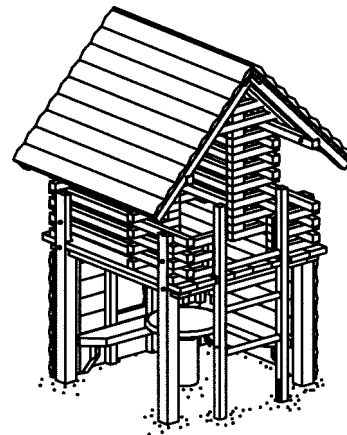
10. Screw the foundation irons onto the ladder and fasten to the House.



11. Fill the foundation holes with concrete B 25, 'earth damp', and tamp. Round the edges of the foundations and cover with ground material.

12. Repair minor damages caused during assembly or transportation.

13. Please ensure that all assembly aids, e. g. excess bolts, assembly instructions, distance battens or tape are removed entirely from the play equipment and the playground after work is finished.



Please note that after about 6 weeks all screws and bolts need to be checked and, if necessary, retightened.