

Instructions for wear checks of play equipment

The equipment must be checked for correct operation and safety, especially the points listed below:

Proof of maintenance

Playground.....

Date of installation

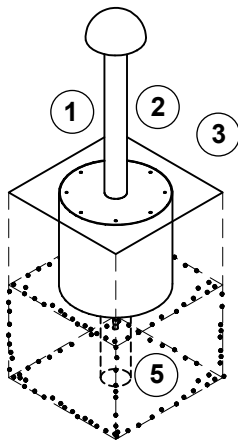
Checks depend on the type of equipment. Any equipment with moving parts must be checked at least twice a year, static equipment at least once a year.

Intervals for maintenance work and checks generally depend on

- the location
- the usage
- the frequency of use
- possible vandalism

For more details see also "General instructions for maintenance of playgrounds".

Mushroom Column Spring
Order No. 5.18030/5.18032



Operation

1. Make sure the pump mechanism moves smoothly.
2. Check water hoses for wear and tear; replace if necessary. To do this, loosen lid bolts (Allen key No. 4) and remove upper part including pump mechanism.
3. Clean sieve of pressure reduction valve if soiled.

Valve and cartridge

4. When replacing the entire valve or the cartridge, pump several times until the automatic shutoff engages (if necessary, shut off the water several times and then turn on again).

Structural stability

Check anchoring to the ground every 12 months, retighten screws and bolts if necessary.

Note

Prior to the start of the frost period, turn off water supply and remove the water pressure column. It is necessary to remove at least the upper part. If the housing part is to remain on site, you may order a winter lid from us (order no. 0.97840).

If a programmable rinsing device (order no. 5.18032) is fitted, the time switch is particularly vulnerable to frost damage as it cannot be drained. Store the pump protected from frost.

Special notes, e.g. for repairs

Repair not carried out, it is still possible to play on equipment

Repair not carried out, equipment is taken out of action

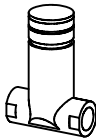
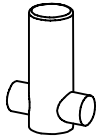


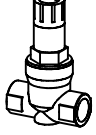
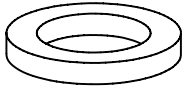
All work carried out, everything is in order

Maintenance carried out by:

..... Date

Spare Parts
Mushroom Column Spring
Order No. 5.18030/5.18032

Please note that the safety standards of the equipment must not be affected. Therefore, when carrying out repairs it is helpful to **only use original parts.**

Order No.	Spare part	Order No.	Spare part
0.97833	self-righting pressure valve (valid until June 2022)		
			please request repair instructions for replacement
0.97832	self-righting pressure valve (valid from July 2022)		
			please request repair instructions for replacement
0.97834	replacement cartridge for self-righting pressure valve		
			please request repair instructions for replacement
0.97835	connecting hose with hose protection		
			
0.97836	pressure reducer		
			
0.97837	seal for hose connection		
			
0.97840	winter lid		
